

## Epson SureColor SC-S80600

GMG Quick Start Guide



# Contents

1	Introduction.....	3
1.1	Substrate Proofing .....	3
1.2	Quick Steps.....	3
2	Epson Control Dashboard .....	4
2.1	Download and setup the Epson Control Dashboard.....	4
2.2	Setup a new control dashboard printer connection .....	4
3	Media Setup.....	5
3.1	Load media to the printer .....	5
3.2	Setup media on the printer.....	5
3.3	Media Handling in the Epson Control Dashboard.....	5
4	Printer and Media Setup in GMG ColorProof .....	6
4.1	Create a new printer .....	6
4.2	Media Handling and Synchronization in GMG ColorProof.....	6
5	Calibration Creation Wizard .....	7
5.1	General Information .....	7
5.2	Create a new Calibration Set and GMG OpenColor Output Condition .....	7
5.3	The Visual Evaluation Test Chart.....	7
5.4	Recalibration .....	7
6	Profiling with GMG OpenColor .....	8
6.1	Output Condition Database .....	8
6.2	Profile Creation .....	8
6.3	Profiling with special inks.....	8
7	Troubleshooting / Q&A.....	9
7.1	Epson Control Dashboard .....	9
7.2	GMG ColorProof and OpenColor .....	9

# 1 Introduction

## 1.1 Substrate Proofing

To close the gap between traditional proofing and mockup creation, Epson SC-S80600 driven by GMG ColorProof and GMG OpenColor is used to create color accurate and reproducible prints.

Epson SC-S80600 allows proofing to be extended to production substrates or substrates that come very close to the look and feel of the final production.

GMG OpenColor allows a fast and easy characterization of the simulated color space based on spectral color information.

To allow the use of virtually any substrate, GMG ColorProof offers you the Calibration Creation Wizard. This enables the creation of a custom calibration set and a corresponding output condition for GMG OpenColor.

### Required chargeable licenses

#### GMG ColorProof System

- Product GMG ColorProof 5.10 (possibly with DotProof 5.10 Option / FlexoProof 5.10)
- Option Epson SC-S80600
- Option GMG OpenColor Output License

#### GMG OpenColor System

- Product GMG OpenColor Profiler Standard 2.1 (or GMG OpenColor Profiler Plus Edition 2.1)
- Option GMG OpenColor Offset (or Option GMG OpenColor Flexo / Option GMG OpenColor Gravure)
- Option GMG OpenColor Profiling for Epson SC-S80600 (included in Option Epson SC-S80600 purchase)

### Additional Documents

- General information can be found on the manufacturer's [website](#)
- Official Epson SC-S80600 [Datasheet](#)
- Epson SC-S80600 Series [Online Manual](#)

## 1.2 Quick Steps

- 1 Install GMG ColorProof and GMG OpenColor and make sure that you have the required licenses.  
See [Required chargeable licenses](#).
- 2 Make sure your printer is ready and connected to a network via TCP/IP.
- 3 Download and setup the Epson Control Dashboard.  
See [Epson Control Dashboard](#).
- 4 Load and setup media on the printer and Epson Control Dashboard.  
See [Media Setup](#).
- 5 Create and setup a new printer and media in GMG ColorProof.  
See [Printer and Media Setup in GMG ColorProof](#).
- 6 Make sure that GMG ColorProof and GMG OpenColor are running and connected.
- 7 Use Calibration Creation Wizard to create a custom calibration set and an output condition for GMG OpenColor.  
See [Calibration Creation Wizard](#).
- 8 Use GMG OpenColor to create multicolor proof profiles.  
See [Profiling with GMG OpenColor](#).

## 2 Epson Control Dashboard

The Epson Control Dashboard contains printer status information, Epson's .emx media profile library and the media configuration of the printer including physical media parameters (defined in 30 media configuration slots).

### 2.1 Download and setup the Epson Control Dashboard

Make sure the printer is fully set up with a fixed IP. IP connection is required for the Epson Control Dashboard connection.

**NOTE: It is important that the COMM driver should not be installed at this stage. This would prevent the correct installation of the Epson Control Dashboard.**

Go to <http://epson.sn>, select the Epson SC-S80600 and go to "Setup". From there you can download and install the Control Dashboard. This will install the COMM driver and configure the Control Dashboard and the Epson Printer Port. The Epson Control Dashboard can now be opened in a browser via the PC's IP address (e.g. <http://192.168.3.104:30561/index.html>).

**NOTE: It is required to modify the Windows Firewall Settings to establish a connection to the Epson Control Dashboard.**

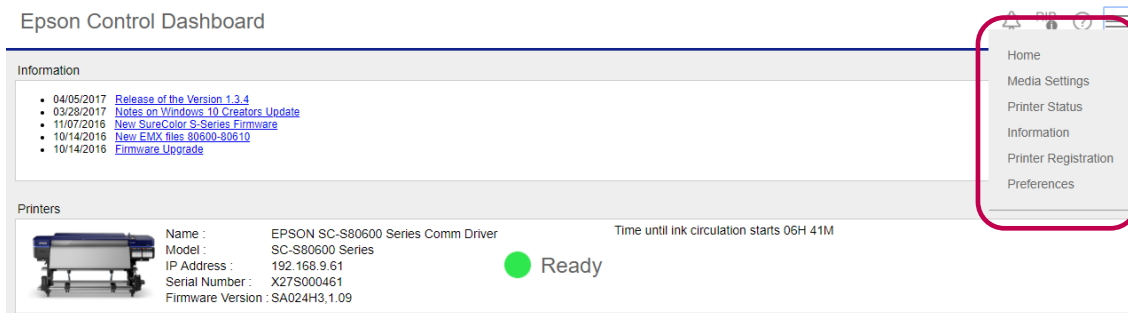
ColorProof PC	Control Dashboard PC
Outbound Connection	Inbound Connection
Open port 30561 TCP	Open port 30561 TCP
Open port 30560 UDP	Open port 30560 UDP
Open port 30558 UDP	Open port 30558 UDP
Inbound Connection	Outbound Connection
Open port 30559 UDP	Open port 30559 UDP

Port must be open

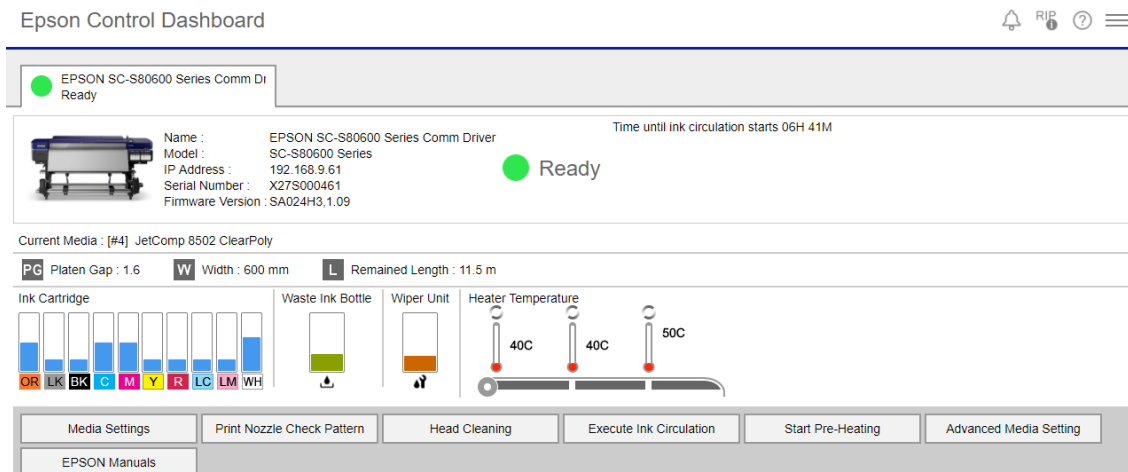
Port needs to be open in some cases

It is necessary to install the Control Dashboard, printer and GMG ColorProof in the same sub net. We recommend installing the Epson Control Dashboard and the ColorProof application on the same PC even though it is possible to install them on separate systems.

### 2.2 Setup a new control dashboard printer connection



You can use the menu to navigate through different pages. On the Printer Registration page, you can register a new printer via TCP/IP. If the installation and setup was successful you can now check your detailed printer status.



## 3 Media Setup

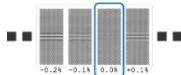
### 3.1 Load media to the printer

Load media referring to the information on the printer panel.

### 3.2 Setup media on the printer

To setup a media on the printer, go to **Menu -> Media Setup -> Easy Media Setup:**

- 1 Define Media Name
- 2 Define Media Type
- 3 Perform Manual Adjustment of the paper feed



Select the pattern with the most homogeneous result (no overlapping or gaps) for A and B.

- 4 Perform Head Alignment



Select the line with the best overlap (finest line) for each pattern.

If you want to modify other physical media settings like the heater configuration and temperature or head movement, go to **Menu -> Media Setup -> Easy Media Setup** or use the Epson Control Dashboard to modify these settings.

### 3.3 Media Handling in the Epson Control Dashboard

Use the Epson Control Dashboard to handle the media and to modify the media settings.

Epson Control Dashboard

Source: Local Media Library

Media Vendor	Media Name	Media Type	Model
3M	RG5333 <FrontLib>	Film	SC-S80600 Series

Target: EPSON SC-S80600 Series Comm Driver

#	Media Setting Name	Media Type	Edit	Current
1		Adhesive Vinyl		
2		Adhesive Vinyl		
3	RG5333-FL	Film		
4	JetComp 8502 ClearPoly	Film		✓
5	JetComp 8508 MetalPoly	Film		
6	JetComp 8410 C1S Board	Paper/Other		
7	JetComp 8506 invisible	Film		
8		Adhesive Vinyl		
9		Adhesive Vinyl		
10		Film		
11		Adhesive Vinyl		
12		Adhesive Vinyl		
13		Adhesive Vinyl		
14		Adhesive Vinyl		
15		Adhesive Vinyl		
16		Adhesive Vinyl		

Last Update 04/25/2018 15:27:51

Parameters for RG5333-FL:

- Media Setting Name: RG5333-FL
- Media Name: RG5333 <FrontLib>
- Media Type: Film
- Platen Cap: 1.5
- Pre-Heater: 50C (122F)
- Platen-Heater: 50C (122F)
- After-Heater: SOC (131F)
- Drying Time Per Pass: 0sec
- After Heater Feed: Off
- Additional Dryer: On

Parameters for JetComp 8502 ClearPoly:

- Media Setting Name: JetComp 8502 ClearPoly
- Media Type: Film
- Platen Cap: 1.5
- Pre-Heater: 40C (104F)
- Platen-Heater: 40C (104F)
- After-Heater: SOC (122F)
- Drying Time Per Pass: 0sec
- After Heater Feed: Mode 1
- Additional Dryer: Off

Home Apply



Epson Control Dashboard 1.5.2 Copyright(C) Seiko Epson Corporation 2015-2018. All rights reserved.

On the left side of the Media Settings page you can manage and download Epson .emx media profiles. The .emx files can be sent to a media configuration slot of the printer on the right side.

On the right side you have a view of 30 media configuration slots referring to the printer configuration. These media configuration slots can be managed and modified and will be synchronized with the printer.

The blue checkmark indicates the “active media” and the parameters that will currently be used when a job is printed.

#### Modify Media Settings

Media settings can be changed by editing the 30 media configuration slots. Therefore you should select a slot and click  to change the media parameters. When you want to create a new media, or delete one of the slots, select a slot and click  to create a new or empty slot.

## 4 Printer and Media Setup in GMG ColorProof

### 4.1 Create a new printer

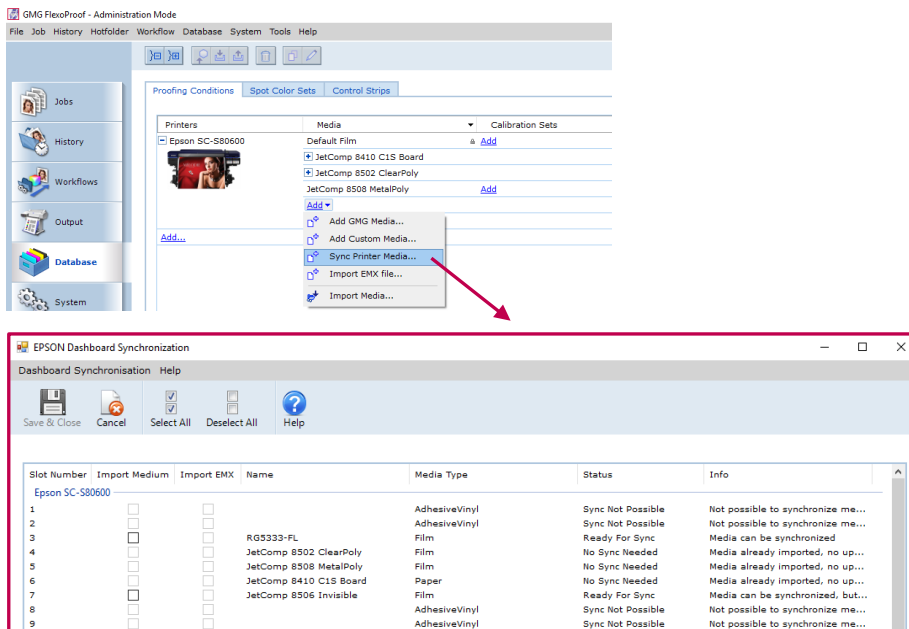
A new printer can be created as usual from the output tab or from the database view. Choose any default media to start with. Make sure that you select an ink set matching the current printer configuration. When creating a printer, a TCP/IP address is required to establish a connection to the Epson Control Dashboard. This connection is needed to synchronize Media with the printer.

### 4.2 Media Handling and Synchronization in GMG ColorProof

It is crucial that GMG ColorProof media names and media types are identical to the media names and types on the printer and in the Epson Control Dashboard. If a media name or type is changed in GMG ColorProof, it must be modified in the Control Dashboard accordingly. The best way to handle this is to synchronize media with the Epson Control Dashboard first and then Synchronize with the active media.

#### Sync Printer Media

To synchronize the media with the printer use the “Sync Printer Media” function.



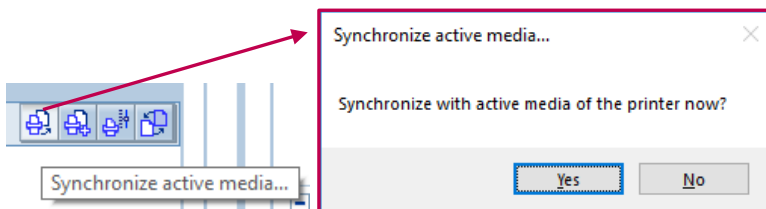
The screenshot shows the EPSON Dashboard Synchronization dialog box. It contains a table with the following data:

Slot Number	Import Medium	Import EMX	Name	Media Type	Status	Info
Epson SC-S80600						
1	<input type="checkbox"/>	<input type="checkbox"/>		AdhesiveVinyl	Sync Not Possible	Not possible to synchronize me...
2	<input type="checkbox"/>	<input type="checkbox"/>		AdhesiveVinyl	Sync Not Possible	Not possible to synchronize me...
3	<input type="checkbox"/>	<input type="checkbox"/>	RG5333-FL	Film	Ready For Sync	Media can be synchronized.
4	<input type="checkbox"/>	<input type="checkbox"/>	JetComp 8502 ClearPoly	Film	No Sync Needed	Media already imported, no up...
5	<input type="checkbox"/>	<input type="checkbox"/>	JetComp 8508 MetalPoly	Film	No Sync Needed	Media already imported, no up...
6	<input type="checkbox"/>	<input type="checkbox"/>	JetComp 8410 C1S Board	Paper	No Sync Needed	Media already imported, no up...
7	<input type="checkbox"/>	<input type="checkbox"/>	JetComp 8506 Invisible	Film	Ready For Sync	Media can be synchronized, but...
8	<input type="checkbox"/>	<input type="checkbox"/>		AdhesiveVinyl	Sync Not Possible	Not possible to synchronize me...
9	<input type="checkbox"/>	<input type="checkbox"/>		AdhesiveVinyl	Sync Not Possible	Not possible to synchronize me...

In case of Epson cloud media the emx can be imported. If .emx is imported a Calibration Set will be generated out of the .emx information.

#### Synchronize with active media of the printer

To synchronize ColorProof with the active media of the printer, click the icon in the “Available Printers” list the printer on the ColorProof “Output” Tab.



Confirm the synchronization and your printer will be synchronized with the media that is currently defined as “active media” on the printer.

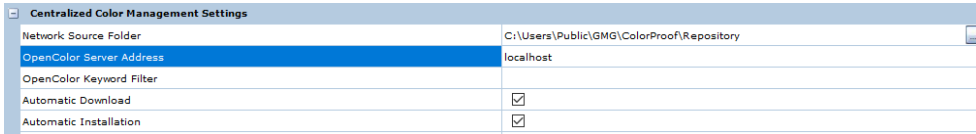
# 5 Calibration Creation Wizard

## 5.1 General Information

To allow the use of virtually any substrate, GMG ColorProof offers you the Calibration Creation Wizard. This enables the creation of a custom calibration set and a corresponding output condition for GMG OpenColor.

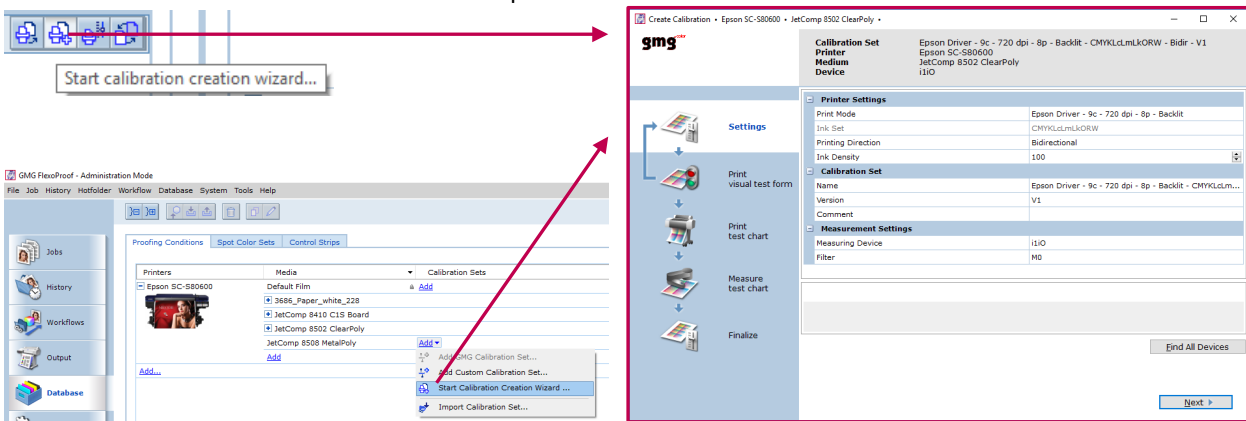
## 5.2 Create a new Calibration Set and GMG OpenColor Output Condition

Before starting the wizard, ensure a GMG OpenColor connection is set in the GMG ColorProof System settings.



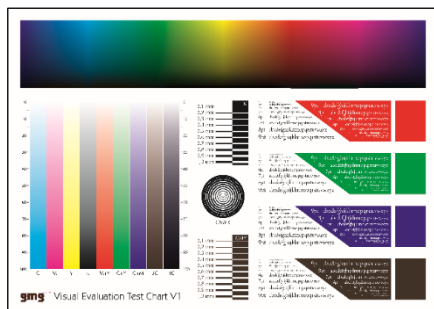
Calibration Creation Wizard also requires a measuring device that is attached and activated in System -> Used Measurement Devices.

Start Calibration Creation Wizard from the Output Tab or from the database view.



The Wizard will guide you through the process of creating a new Calibration Set and Output Condition.

## 5.3 The Visual Evaluation Test Chart



The Visual Evaluation Test Chart needs to be checked carefully for any effect of overinking. It is crucial for the quality of the Calibration Set and Output Condition that no overinking appears on the test chart. In case of overinking, go back to the settings page of the wizard and reduce the ink density values (10% steps are recommended).

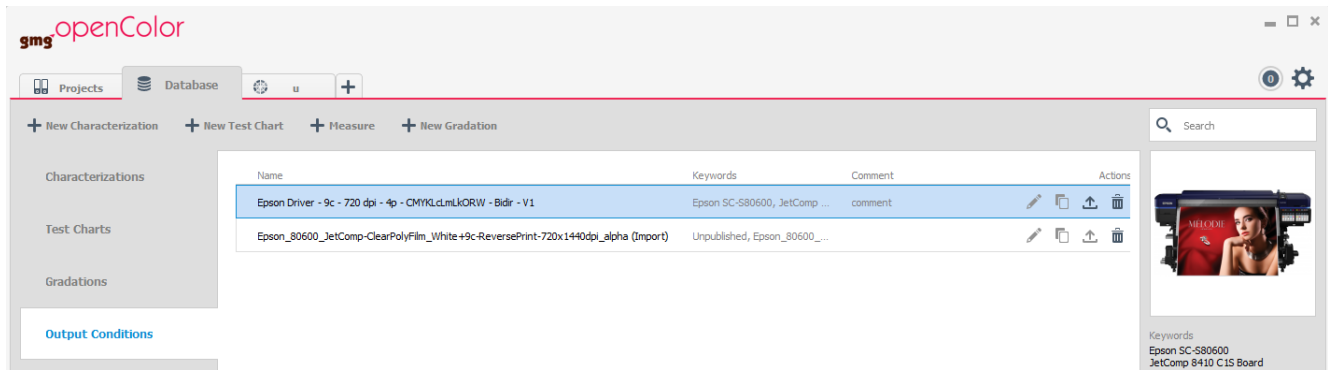
## 5.4 Recalibration

Calibration Creation Wizard has no functionality to recalibrate a created calibration set. It is only used for the Calibration Set creation. To recalibrate the printer, the normal Calibration Wizard must be used.

## 6 Profiling with GMG OpenColor

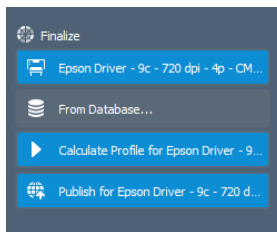
### 6.1 Output Condition Database

All available output conditions for the Epson SC-S80600 are listed under **Database -> Output Conditions**.



### 6.2 Profile Creation

When creating a new project, an output condition can be selected from the database.



Once selected, the project is ready for static and dynamic profiles that can be published and used in GMG ColorProof.

All projects can be downloaded automatically or manually by using the **Database -> Download -> From GMG OpenColor** function.

### 6.3 Profiling with special inks

To use white ink in a GMG OpenColor project, you must activate "Use White Ink" in the Proofing Condition before creating a new profile.



**Note: Spot colors with metallic ink must be created and managed in a spot color .db3. GMG OpenColor does not support profiling with metallic ink.**



## 7 Troubleshooting / Q&A

### 7.1 Epson Control Dashboard

**Q: Is the Epson Control Dashboard mandatory to use the SC-S80600?**

A: It is strongly recommended to use the Epson Control Dashboard together with the SC-S80600 to maintain and control the physical media settings. However, it is possible to use the printer without the Control Dashboard.

**Q: Is the Epson Control Dashboard part of the ColorProof installer?**

A: No. The Epson Control Dashboard must be downloaded, installed and configured separately.

**Q: I can't access the Control Dashboard in my browser.**

A: Open port 30561 TCP on the used PC (Outbound connection) and open port 30561 TCP on the Control Dashboard PC (Inbound connection).

**Q: How do I connect ColorProof with the Epson Control Dashboard?**

A: Ensure that Control Dashboard, printer and GMG ColorProof are installed in the same sub net and that TCP/IP is used as printer connection in GMG ColorProof.

### 7.2 GMG ColorProof and OpenColor

**Q: Calibration Creation Wizard does not find the measuring device that is attached to my PC.**

A: Make sure, that the measuring device is activated in the Systems menu -> Used Measuring Devices.

**Q: Can I use the Calibration Creation Wizard to recalibrate the printer?**

A: No. To recalibrate the printer, the normal Calibration Wizard must be used.

**Q: Where can I see or modify the advanced media settings in GMG ColorProof?**

A: There is no possibility to see or modify the advanced media settings in GMG ColorProof. All media settings are managed in the Epson Control Dashboard.

**Q: Does the SC-S80600 support multi-layer printing?**

A: No. Layered printing with "feedback to origin" (print one layer first, revert media to origin, print second layer on top) is not available on the SC-S80600.

**Q: Is it possible to use white and metallic ink in one job?**

A: No. The SC-S80600 can only be equipped with either white or metallic ink resulting in two different ink sets. Switching from one special ink to the other requires a manual change of the ink configuration on the printer.

**Q: How can I share Projects and Output Conditions with other ColorProof instances?**

A: Before it is possible to download Output Conditions or Projects to GMG ColorProof, it is required to first export and import the Media Set (including its unique media ID). Otherwise, a download will not be possible.