

GMG SupportNews

English edition 9/2016

May 3, 2016

Dear Sir or Madam,

Today we would like to inform you of the following topics:

Service release of GMG ColorProof 5.7.3

- ✓ Release notes
- ✓ Resolved issues
- ✓ End of Life
- ✓ Build number
- ✓ Tips & Tricks
 - How to accelerate 1bit/DotProof job creation
 - How to improve the connection to the X-Rite i1

Service release of GMG ColorProof 5.7.3

Release date

ColorProof 5.7.3.469 has been released for use on 32bit operating systems today, Tuesday, May 3, 2016.

ColorProof 5.7.3.470 has been released for use on 64bit operating systems today, Tuesday, May 3, 2016.

License

ColorProof 5.0 - 5.6.1 → 5.7.3 New license required, chargeable

ColorProof 5.7.0 – 5.7.2 → 5.7.3 No new license required

Supported OS

- o Windows 10
- o Windows 8.1
- o Windows 8
- o Windows 7
- o Windows Server 2012 R2
- o Windows Server 2008 R2

Download

[GMG ColorProof 5.7.3](#)

Installation instructions

1. Create an 'environment backup' of your existing configuration (version 5.5 or newer)
2. Fully close your ColorProof-Software, including the tray icon in the task bar.
3. Extract the file "GMG_ColorProof_5_7_3_4xx.zip"
4. Double click the setup file "Install_CP5.bat" to run the installation.
5. Start ColorProof after the installation wizard is closed.
6. ColorProof is now updated/installed.

Resolved issues

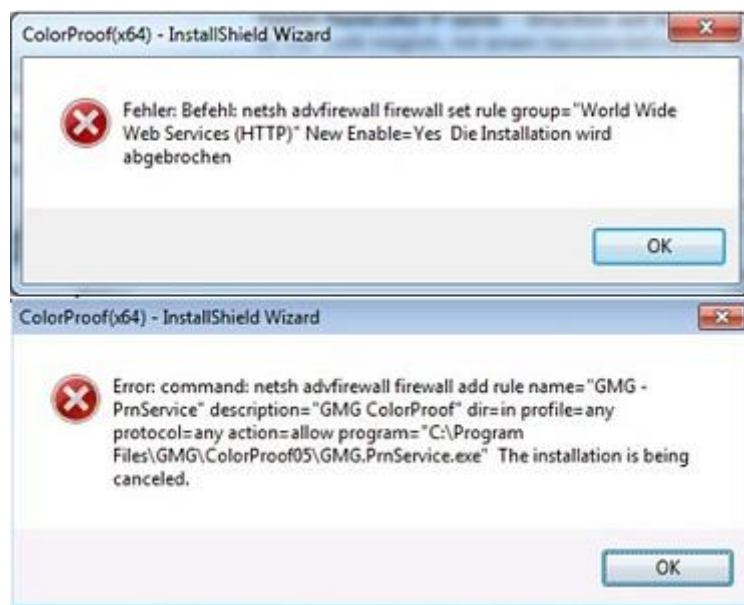
The following technical issues have been resolved in ColorProof 5.7.3.469/470. Please note that the list describes the problem, not the solution.

Installation error - Firewall settings

During the installation process of ColorProof 5.7.3 it is attempted to set some rights in the Firewall for the program components WebClient and PRN-Service. When it was not allowed to set these rules in the firewall, the ColorProof installation 5.7.3.442/443 aborted. Some causes of a failed installation were:

- Windows Firewall disabled
- Windows Firewall replaced by another Firewall system
- GPO inhibits local changes (by installer)
- Localization issue with WWW Services rule

When existing ColorProof systems that did not allow these firewall rules, were updated, the installation of version 5.7.3.442/443 was aborted at the very last step. In this case there was no rollback to the previously installed version. The only workaround was installing without the WebClient component. [63217, 63231, 63266, 63280, 63298, 63349, 63358, 63316, 63410]



Custom media on Epson printers

In ColorProof version 5.7.3.442/443 jobs with the following settings were aborted with an error:

- Epson Stylus Pro x900/x890 + Custom medium
- Epson Stylus Pro WT7900 + Custom medium

The jobs cannot be printed due to wrong ink parameters. The printer display informs that there is a *'Black ink mismatch: the type of the ink in different'*. There was no workaround. ColorProof jobs with GMG media were not affected. [62856, 63224, 63272, 63300]

SEP-file with one active channel

ColorProof jobs with a .sep file with two channels could not be printed when one of both channels was deactivated. The Jobticket service crashed. [63175]

Update error – Image Label

After update of CP 5.7.2.530 to CP 5.7.3.442 some updated workflows with activated image label could not generate jobs. The files in the hotfolder first were marked as 'recognized', but after that the status changed to 'unrecognized' and no job appeared in the job list. [63237, 63267]

Correction - ProofStandards for Epson SureColor P Series

We list again the ProofStandards for the SureColor-P Series. In the previous SupportNewsletter there was a mistake concerning the print mode for GMG ProofPaper matte 140 and GMG NewsProof 76. The correct print mode is 'GMG Driver - Matte Black - 720x1440 dpi'.

Epson SureColor P7000 STD (LLK) and P9000 STD (LLK)

ProofStandards	Media	Print mode
GRACoL 2006 Coated Comm. Sheet (#1)	GMG Proofpaper semimatte 250 GMG Proofpaper semimatte light	GMG Driver - 8c - Photo Black - 720x1440 dpi
GRACoL 2013 Coated (CRPC 6)		
GRACoL 2013 Uncoated (CRPC 3)		
ISO Coated v2 (39L)		
JapanColor 2011 Coated		
PSO Coated NPscreen (43L)		
PSO Coated v2 GlossyLaminate (50L)		
PSO Coated v2 MatteLaminate (49L)		
PSO Coated v3 (51)		
PSO LwC Improved (45L)		
PSO LwC Standard (46L)		
PSO MFC Paper (41L)		
PSO SNP Paper (42L)		
PSO Uncoated ISO12647 (47L)		
PSR LwC plus v2		
PSR LwC v2		
PSR MF		
PSR SC plus v2		
PSR SC v2		
SC Paper (40L)		
SWOP 2013 C3 (CRPC 5)		
SWOP 2013 C5		
SWOP Groundwood (#5)		
SWOP Publication Sheet (#3)		
GRACoL 2006 Coated Comm. Sheet (#1)	GMG Proofpaper gloss 250	
GRACoL 2013 Coated (CRPC 6)		
ISO Coated v2 (39L)		
JapanColor 2011 Coated		
PSO Coated NPscreen (43L)		
PSO Coated v3 (51)		
PSO Coated v2 GlossyLaminate (50L)		
PSO LwC Improved (45L)		
GRACoL 2006 Coated Comm. Sheet (#1)	GMG Proofpaper semimatte 250 OBA	
GRACoL 2013 Coated (CRPC 6)		
GRACoL 2013 Uncoated (CRPC 3)		
ISO Coated v2 (39L)		
PSO LwC Improved (45L)		
PSO Coated v3 (51)		
PSO Uncoated v3 (52)		
PSO Uncoated ISO12647 (47L)		
SWOP 2013 C3 (CRPC 5)		
SWOP 2013 C5		
ISO Newspaper (26 v4)	GMG Proofpaper matte 140	GMG Driver - 8c - Matte Black - 720x1440 dpi
PSO Uncoated ISO12647 (47L)		
PSO Uncoated v3 (52)		
WAN-IFRA Newspaper (26 v5)	GMG NewsProof 76	GMG Driver - 4c - Matte Black - 720x720 dpi
ISO Newspaper (26 v4)		
WAN-IFRA Newspaper (26 v5)		

ProofStandards for Epson SureColor P7000 V and P9000 V

ProofStandards	Media	Print mode		
GRACoL 2006 Coated Comm. Sheet (#1)	GMG Proofpaper semimatte 250 GMG Proofpaper semimatte light	GMG Driver - 10c - Photo Black - 720x1440 dpi		
GRACoL 2013 Coated (CRPC 6)				
GRACoL 2013 Uncoated (CRPC 3)				
ISO Coated v2 (39L)				
JapanColor 2011 Coated				
PSO Coated v3 (51)				
PSO Coated NPscreen (43L)				
PSO Coated v2 GlossyLaminate (50L)				
PSO Coated v2 MatteLaminate (49L)				
PSO LwC Improved (45L)				
PSO LwC Standard (46L)				
PSO MFC Paper (41L)				
PSO SNP Paper (42L)				
PSO Uncoated ISO12647 (47L)				
PSR LwC plus v2				
PSR LwC v2				
PSR MF				
PSR SC plus v2				
PSR SC v2				
SC Paper (40L)				
SWOP 2013 C3 (CRPC 5)				
SWOP 2013 C5				
SWOP Groundwood (#5)				
SWOP Publication Sheet (#3)				
GRACoL 2006 Coated Comm. Sheet (#1)	GMG Proofpaper gloss 250	GMG Driver - 10c - Photo Black - 720x1440 dpi		
GRACoL 2013 Coated (CRPC 6)				
ISO Coated v2 (39L)				
JapanColor 2011 Coated				
PSO Coated NPscreen (43L)				
PSO Coated v3 (51)				
PSO Coated v2 GlossyLaminate (50L)				
PSO LwC Improved (45L)				
GRACoL 2006 Coated Comm. Sheet (#1)	GMG Proofpaper semimatte 250 OBA		GMG Driver - 10c - Photo Black - 720x1440 dpi	
GRACoL 2013 Coated (CRPC 6)				
GRACoL 2013 Uncoated (CRPC 3)				
ISO Coated v2 (39L)				
PSO LwC Improved (45L)				
PSO Coated v3 (51)				
PSO Uncoated v3 (52)				
PSO Uncoated ISO12647 (47L)				
SWOP 2013 C3 (CRPC 5)				
SWOP 2013 C5				
ISO Newspaper (26 v4)	GMG Proofpaper matte 140			GMG Driver - 10c - Matte Black - 720x1440 dpi
PSO Uncoated ISO12647 (47L)				
PSO Uncoated v3 (52)	GMG NewsProof 76			
WAN-IFRA Newspaper (26 v5)				
ISO Newspaper (26 v4)	GMG NewsProof 76	GMG Driver - 4c - Matte Black - 720x720 dpi		
WAN-IFRA Newspaper (26 v5)				
ISO Newspaper (26 v4)	GMG NewsProof 76			
WAN-IFRA Newspaper (26 v5)				

ProofStandards for Epson SureColor P6000 and P8000

ProofStandards	Medien	Druckmodus
GRACoL 2006 Coated Comm. Sheet (#1)	GMG Proofpaper semimatte 250 GMG Proofpaper semimatte light	GMG Driver - 8c - Photo Black - 720x1440 dpi
GRACoL 2013 Coated (CRPC 6)		
GRACoL 2013 Uncoated (CRPC 3)		
ISO Coated v2 (39L)		
JapanColor 2011 Coated		
PSO Coated NPscreen (43L)		
PSO Coated v2 GlossyLaminate (50L)		
PSO Coated v2 MatteLaminate (49L)		
PSO Coated v3 (51)		
PSO LwC Improved (45L)		
PSO LwC Standard (46L)		
PSO MFC Paper (41L)		
PSO SNP Paper (42L)		
PSO Uncoated ISO12647 (47L)		
PSR LwC plus v2		
PSR LwC v2		
PSR MF		
PSR SC plus v2		
PSR SC v2		
SC Paper (40L)		
S'WOP 2013 C3 (CRPC 5)	GMG Proofpaper gloss 250	
S'WOP 2013 C5		
S'WOP Groundwood (#5)		
S'WOP Publication Sheet (#3)		
GRACoL 2006 Coated Comm. Sheet (#1)		
GRACoL 2013 Coated (CRPC 6)		
ISO Coated v2 (39L)		
JapanColor 2011 Coated		
PSO Coated NPscreen (43L)		
PSO Coated v3 (51)		
PSO Coated v2 GlossyLaminate (50L)	GMG Proofpaper semimatte 250 OBA	
PSO LwC Improved (45L)		
GRACoL 2006 Coated Comm. Sheet (#1)		
GRACoL 2013 Coated (CRPC 6)		
GRACoL 2013 Uncoated (CRPC 3)		
ISO Coated v2 (39L)		
PSO LwC Improved (45L)		
PSO Coated v3 (51)		
PSO Uncoated v3 (52)		
PSO Uncoated ISO12647 (47L)		
S'WOP 2013 C3 (CRPC 5)	GMG Proofpaper matte 140	GMG Driver - 8c - Matte Black - 720x1440 dpi
S'WOP 2013 C5		
ISO Newspaper (26 v4)	GMG NewsProof 76	GMG Driver - 4c - Matte Black - 720x720 dpi
PSO Uncoated ISO12647 (47L)		
PSO Uncoated v3 (52)		
WAN-IFRA Newspaper (26 v5)		
ISO Newspaper (26 v4)		
WAN-IFRA Newspaper (26 v5)		

End of Life

Please note, that we will no longer provide bug fixes, maintenance releases, workarounds, or patches for bugs found in 5.7.3.442/443 or older.

Build number

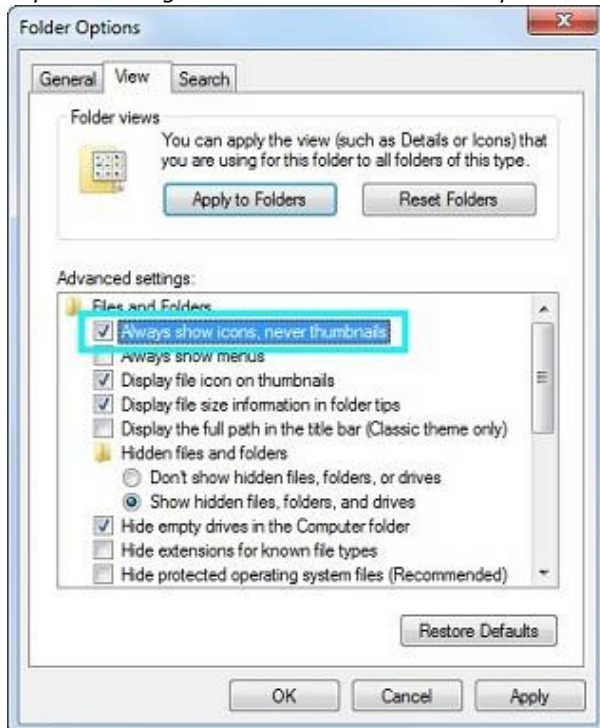
ColorProof Version 5.7.3.470 (64bit)
ColorProof Version 5.7.3.469 (32bit)

Tips and Tricks:

How to accelerate 1bit/DotProof job creation

When thumbnails are enabled (box unchecked) Windows creates a preview/thumbnaill. This might take a very long time for high resolution 1bit files. During the creation process the file can't be used for job creation in ColorProof.

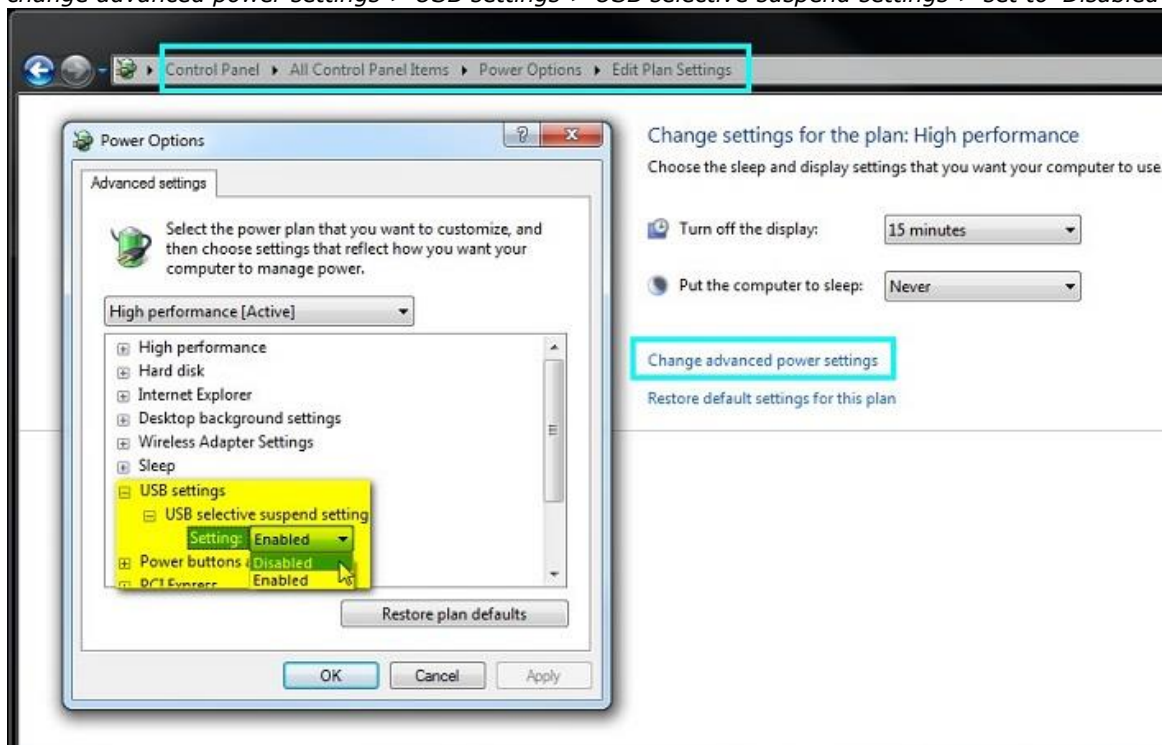
Please make sure the following setting is activated, in order to speed up the 1-bit job creation: *Windows Explorer > Organize > Folder and Search options > View > "Always show icons, never thumbnails"*



How to improve the connection to the X-Rite i1 Pro2

After switching between measurement conditions (M0/M1/M2) it sometimes happens that the X-Rite i1 does not react anymore. This means that measuring or initializing the device is not possible anymore. Typically, disconnecting the USB cable and connecting again would solve the issue.

The cause of the issue lies in the power management of Windows. For a long term solution you can disable the USB selective suspend setting: *Control Panel > Power Options > change plan settings > change advanced power settings > USB settings > USB selective suspend settings > set to 'Disabled'*.



Questions? Feedback? Comments? Please, let us know!

With kind regards from Tübingen

Jochen Moehrke
Manager Customer Support