

GMG SupportNews

English edition 8/2016

April 25, 2016

Dear Sir or Madam,

Today we would like to inform you of the following topics:

Release of GMG ColorProof 5.7.3

✓ Release notes

✓ New Features

- 1-Click installation
- Support of Epson SureColor P7000 STD (LLK) and P9000 STD (LLK)
- ProofStandards for Epson SureColor P7000 STD (LLK) and P9000 STD (LLK)
- Additional ProofStandards for Epson SureColor P7000V and P9000V
- Additional ProofStandards for Epson SureColor P6000 and P8000
- Conversion of Epson Stylus Pro x900 profiles to Epson SureColor-P
- Conversion of Epson Stylus Pro x900 spot color sets to Epson SureColor-P
- Improved Active Drying for Epson Printers
- PANTONE Plus - 112 new spot colors
- X-Rite measurement device i1iSis 2 for calibration
- ProfileEditor: Gamut Viewer Improvements
- Localization of Epson SureColor-P Printer names for China and Japan

✓ Resolved issues

✓ End of Life

✓ Build number

✓ Tips and Tricks: ProfileEditor – Measurement M1/M2 of patches <10mm

Release of GMG ColorProof 5.7.3

Release date

ColorProof 5.7.3.442 has been released for use on 32bit operating systems today, Monday, April 25, 2016.

ColorProof 5.7.3.443 has been released for use on 64bit operating systems today, Monday, April 25, 2016.

License

ColorProof 5.0 - 5.6.1 → 5.7.3 New license required, chargeable

ColorProof 5.7.0 – 5.7.2 → 5.7.3 No new license required

Supported OS

- o Windows 10
- o Windows 8.1
- o Windows 8
- o Windows 7
- o Windows Server 2012 R2
- o Windows Server 2008 R2

Download

[GMG ColorProof 5.7.3](#)

Installation instructions

1. Create an environment backup of your existing configuration (version 5.5 or newer)
2. Fully close ColorProof, including the tray icon in the task bar.
3. Extract the file "GMG_ColorProof_5_7_3_4xx.zip"
4. Double-Click "Install_CP5.bat" to run the setup file
5. Start ColorProof after the installation wizard is closed.
6. ColorProof is now updated/installed.

New Features

1-Click installation

For the first time, the ColorProof installer is offered as a single zip file. Only one file needs to be downloaded and installed. This simplifies the installation process. The previous split in 3 packages: "prerequisites" (supporting components), "application" (program) and "data" (profile package) is no longer required.

Support of Epson SureColor P7000 STD (LLK) and P9000 STD (LLK)

With ColorProof 5.7.3 we introduce the support of the UltraChrome HDX ten-colour pigment ink-set with light light black. The Epson SureColor P7000 and P9000 Standard Edition delivers 98% of Pantone® certified colours to create superior-quality, highly-accurate results with bright, vivid colours. For stunning prints, an Advanced Black and White Mode helps produce high density, deep, rich blacks and ultra-smooth tones.



Epson SureColor-P7000/9000 Violet



Epson SureColor-P7000/9000 STD (LLK)



ColorProof 5.7.3 includes the support of the 8c-print mode. The support of the 10c print mode will follow in May/June 2016.

ProofStandards for Epson SureColor P7000 STD (LLK) and P9000 STD (LLK)

The following list of new ProofStandards is included in ColorProof version 5.7.3.

ProofStandards	Media	Print mode			
GRACoL 2006 Coated Comm. Sheet (#1)	GMG Proofpaper semimatte 250 GMG Proofpaper semimatte light	GMG Driver - 8c - Photo Black - 720x1440 dpi			
GRACoL 2013 Coated (CRPC 6)					
GRACoL 2013 Uncoated (CRPC 3)					
ISO Coated v2 (39L)					
JapanColor 2011 Coated					
PSO Coated NPscreen (43L)					
PSO Coated v2 GlossyLaminate (50L)					
PSO Coated v2 MatteLaminate (49L)					
PSO Coated v3 (51)					
PSO LwC Improved (45L)					
PSO LwC Standard (46L)					
PSO MFC Paper (41L)					
PSO SNP Paper (42L)					
PSO Uncoated ISO12647 (47L)					
PSR LwC plus v2					
PSR LwC v2					
PSR MF					
PSR SC plus v2					
PSR SC v2					
SC Paper (40L)					
S'WOP 2013 C3 (CRPC 5)					
S'WOP 2013 C5					
S'WOP Groundwood (#5)					
S'WOP Publication Sheet (#3)					
GRACoL 2006 Coated Comm. Sheet (#1)	GMG Proofpaper gloss 250	GMG Driver - 8c - Photo Black - 720x1440 dpi			
GRACoL 2013 Coated (CRPC 6)					
ISO Coated v2 (39L)					
JapanColor 2011 Coated					
PSO Coated NPscreen (43L)					
PSO Coated v3 (51)					
PSO Coated v2 GlossyLaminate (50L)					
PSO LwC Improved (45L)					
GRACoL 2006 Coated Comm. Sheet (#1)	GMG Proofpaper semimatte 250 OBA		GMG Driver - 8c - Photo Black - 720x1440 dpi		
GRACoL 2013 Coated (CRPC 6)					
GRACoL 2013 Uncoated (CRPC 3)					
ISO Coated v2 (39L)					
PSO LwC Improved (45L)					
PSO Coated v3 (51)					
PSO Uncoated v3 (52)					
PSO Uncoated ISO12647 (47L)					
S'WOP 2013 C3 (CRPC 5)					
S'WOP 2013 C5					
ISO Newspaper (26 v4)	GMG Proofpaper matte 140			GMG Driver - 8c - Photo Black - 720x1440 dpi	
PSO Uncoated ISO12647 (47L)					
PSO Uncoated v3 (52)					
WAN-IFRA Newspaper (26 v5)	GMG NewsProof 76	GMG Driver - 8c - Photo Black - 720x1440 dpi			
ISO Newspaper (26 v4)					
WAN-IFRA Newspaper (26 v5)	GMG NewsProof 76				GMG Driver - 4c - Matte Black - 720x720 dpi
ISO Newspaper (26 v4)					
WAN-IFRA Newspaper (26 v5)	GMG NewsProof 76				
ISO Newspaper (26 v4)					
WAN-IFRA Newspaper (26 v5)					

Additional ProofStandards for Epson SureColor P7000V and P9000V

The following list of new ProofStandards is included in ColorProof version 5.7.3.

ProofStandards	Media	Print mode
GRACoL 2006 Coated Comm. Sheet (#1)	GMG Proofpaper semimatte 250 GMG Proofpaper semimatte light	GMG Driver - 10c - Photo Black - 720x1440 dpi
GRACoL 2013 Coated (CRPC 6)		
GRACoL 2013 Uncoated (CRPC 3)		
ISO Coated v2 (39L)		
JapanColor 2011 Coated		
PSO Coated v3 (51)		
PSO Coated NPscreen (43L)		
PSO Coated v2 GlossyLaminate (50L)		
PSO Coated v2 MatteLaminate (49L)		
PSO LwC Improved (45L)		
PSO LwC Standard (46L)		
PSO MFC Paper (41L)		
PSO SNP Paper (42L)		
PSO Uncoated ISO12647 (47L)		
PSR LwC plus v2		
PSR LwC v2		
PSR MF		
PSR SC plus v2		
PSR SC v2		
SC Paper (40L)		
SWOP 2013 C3 (CRPC 5)		
SWOP 2013 C5		
SWOP Groundwood (#5)		
SWOP Publication Sheet (#3)		
GRACoL 2006 Coated Comm. Sheet (#1)	GMG Proofpaper gloss 250	GMG Driver - 10c - Photo Black - 720x1440 dpi
GRACoL 2013 Coated (CRPC 6)		
ISO Coated v2 (39L)		
JapanColor 2011 Coated		
PSO Coated NPscreen (43L)		
PSO Coated v3 (51)		
PSO Coated v2 GlossyLaminate (50L)		
PSO LwC Improved (45L)		
GRACoL 2006 Coated Comm. Sheet (#1)	GMG Proofpaper semimatte 250 OBA	GMG Driver - 10c - Photo Black - 720x1440 dpi
GRACoL 2013 Coated (CRPC 6)		
GRACoL 2013 Uncoated (CRPC 3)		
ISO Coated v2 (39L)		
PSO LwC Improved (45L)		
PSO Coated v3 (51)		
PSO Uncoated v3 (52)		
PSO Uncoated ISO12647 (47L)		
SWOP 2013 C3 (CRPC 5)		
SWOP 2013 C5		
ISO Newspaper (26 v4)	GMG Proofpaper matte 140	GMG Driver - 10c - Photo Black - 720x1440 dpi
PSO Uncoated ISO12647 (47L)		
PSO Uncoated v3 (52)		
WAN-IFRA Newspaper (26 v5)	GMG NewsProof 76	GMG Driver - 10c - Photo Black - 720x1440 dpi
ISO Newspaper (26 v4)		
WAN-IFRA Newspaper (26 v5)	GMG NewsProof 76	GMG Driver - 4c - Matte Black - 720x720 dpi
ISO Newspaper (26 v4)		
WAN-IFRA Newspaper (26 v5)		

Additional ProofStandards for Epson SureColor P6000 and P8000

The following list of new ProofStandards is included in ColorProof version 5.7.3.

ProofStandards	Media	Print mode			
GRACoL 2006 Coated Comm. Sheet (#1)	GMG Proofpaper semimatte 250 GMG Proofpaper semimatte light	GMG Driver - 8c - Photo Black - 720x1440 dpi			
GRACoL 2013 Coated (CRPC 6)					
GRACoL 2013 Uncoated (CRPC 3)					
ISO Coated v2 (39L)					
JapanColor 2011 Coated					
PSO Coated NPscreen (43L)					
PSO Coated v2 GlossyLaminate (50L)					
PSO Coated v2 MatteLaminate (49L)					
PSO Coated v3 (51)					
PSO LwC Improved (45L)					
PSO LwC Standard (46L)					
PSO MFC Paper (41L)					
PSO SNP Paper (42L)					
PSO Uncoated ISO12647 (47L)					
PSR LwC plus v2					
PSR LwC v2					
PSR MF					
PSR SC plus v2					
PSR SC v2					
SC Paper (40L)					
S'WOP 2013 C3 (CRPC 5)					
S'WOP 2013 C5					
S'WOP Groundwood (#5)					
S'WOP Publication Sheet (#3)					
GRACoL 2006 Coated Comm. Sheet (#1)	GMG Proofpaper gloss 250	GMG Driver - 8c - Photo Black - 720x1440 dpi			
GRACoL 2013 Coated (CRPC 6)					
ISO Coated v2 (39L)					
JapanColor 2011 Coated					
PSO Coated NPscreen (43L)					
PSO Coated v3 (51)					
PSO Coated v2 GlossyLaminate (50L)					
PSO LwC Improved (45L)					
GRACoL 2006 Coated Comm. Sheet (#1)	GMG Proofpaper semimatte 250 OBA		GMG Driver - 8c - Photo Black - 720x1440 dpi		
GRACoL 2013 Coated (CRPC 6)					
GRACoL 2013 Uncoated (CRPC 3)					
ISO Coated v2 (39L)					
PSO LwC Improved (45L)					
PSO Coated v3 (51)					
PSO Uncoated v3 (52)					
PSO Uncoated ISO12647 (47L)					
S'WOP 2013 C3 (CRPC 5)					
S'WOP 2013 C5					
ISO Newspaper (26 v4)	GMG Proofpaper matte 140			GMG Driver - 8c - Photo Black - 720x1440 dpi	
PSO Uncoated ISO12647 (47L)					
PSO Uncoated v3 (52)					
WAN-IFRA Newspaper (26 v5)	GMG NewsProof 76	GMG Driver - 8c - Photo Black - 720x1440 dpi			
ISO Newspaper (26 v4)					
WAN-IFRA Newspaper (26 v5)	GMG NewsProof 76				GMG Driver - 4c - Matte Black - 720x720 dpi
ISO Newspaper (26 v4)					
WAN-IFRA Newspaper (26 v5)	GMG NewsProof 76				
ISO Newspaper (26 v4)					

Conversion of Epson Stylus Pro x900 profiles to Epson SureColor-P

Contone profile (MX4) conversion is possible: *ProfileEditor: Tools > Convert Profile.*

The following conversions are offered for GMG ProofPaper semimatte 250:

- Conversion of Epson Stylus Pro x900 10c profiles to Epson SureColor P7000/9000 VIOLET 10c
- Conversion of Epson Stylus Pro x900/x890 8c profiles to Epson SureColor P7000/9000 VIOLET 10c
- Conversion of Epson Stylus Pro x900/x890 8c profiles to Epson SureColor P7000/9000 STD (LLK) 8c
- Conversion of Epson Stylus Pro x900/x890 8c profiles to Epson SureColor P6000/8000 8c (*)

(*) This conversion is not (yet) listed in ProfileEditor. The conversion to Epson SureColor P6000/8000 STD 8c is however identical to the conversion to P7000/9000 STD (LLK) 8c. So, if you want to convert Epson Stylus Pro x900/x890 8c profiles to SureColor P6000/P8000, please use the third conversion rule: Conversion of Epson Stylus Pro x900/x890 8c profiles to Epson SureColor P7000/9000 STD (LLK) 8c

In case you are using specific noise values in a profile, we recommend to decrease the values. When converting MX4 Epson x900 proof profiles to the color space of the SureColor printers, we found that a reduction of the noise frequency by ca. 25% leads to a most comparable result. The intensity does not need to be adjusted.

Example: PSO LWC Improved 45L - GMG ProofPaper semimatte 250

	Epson Stylus Pro x900		Epson SureColor SC-P	
	CMY	K	CMY	K
Frequency	15	15	10	10
Intensity	2	2	2	2

Example: PSO LWC Standard 46L - GMG ProofPaper semimatte 250

	Epson Stylus Pro x900		Epson SureColor SC-P	
	CMY	K	CMY	K
Frequency	20	20	13	13
Intensity	2	2	2	2

Conversion of Epson Stylus Pro x900 spot color sets to Epson SureColor-P

Spotcolor database (db3) conversion is possible: *SpotColorEditor: Measure > Convert.*

The following conversions for GMG ProofPaper semimatte 250 are offered:

- Conversion of Epson Stylus Pro x900 10c spot color sets to Epson SureColor P7000/9000 VIOLET 10c
- Conversion of Epson Stylus Pro x900/x890 8c spot color sets to Epson SureColor P7000/9000 VIOLET 10c
- Conversion of Epson Stylus Pro x900/x890 8c spot color sets to Epson SureColor P7000/9000 STD (LLK) 8c
- Conversion of Epson Stylus Pro x900/x890 8c spot color sets to Epson SureColor P6000/8000 8c (*)

(*) This conversion is not (yet) listed in SpotColorEditor. The conversion to Epson SureColor P6000/8000 STD 8c is however identical to the conversion to P7000/9000 STD (LLK) 8c. So, if you want to convert Epson Stylus Pro x900/x890 8c spot color sets to SureColor P6000/P8000, please use the third conversion rule: Conversion of Epson Stylus Pro x900/x890 8c spot color sets to Epson SureColor P7000/9000 STD (LLK) 8c.

PANTONE Plus - 112 new spot colors

Pantone has introduced [112 new spot colors](#). The new palette incorporates key design trends across industries, but also serves as an important signifier of new cultural and social influences on the overall movement of color, see [press release of Pantone](#).

The new colors are included in the following spot color sets in ColorProof 5.7.3:

- Pantone Plus Coated
- Pantone Plus Uncoated

It concerns the above mentioned spot color sets of these printers:

- Epson SureColor P6000/P7000 (violet)/P7000 STD (LLK)
- Epson Stylus Pro 4900/7900/9900
- Epson Stylus Pro 7890/9890
- Epson Stylus Pro 4880/7880/9880

- Epson Stylus Pro WT7900
- HP Designjet Z2100/Z3100/Z3200/Z5200/Z6200
- Canon imagePROGRAF iPF6300/iPF6300S/iPF6350/iPF6400/iPF6400S/iPF6410/iPF6410S/iPF6450/iPF6460
- Canon imagePROGRAF iPF8300/iPF8300S/iPF8310S/iPF8400/iPF8400S/iPF84010
- Roland VersaCAMM VS / VersaUV LEC330
- Mimaki UJF706

Improved Active Drying for Epson Printers with Spectroproofer

The improved active drying synchronizes the ink drying of calibration charts and media wedges. The identical way of drying ensures consistency in the ink adhesion to the substrate and this in turn leads to a higher proofing quality.

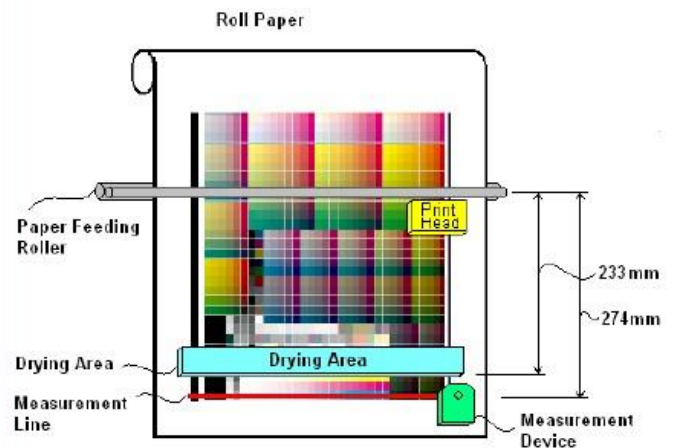
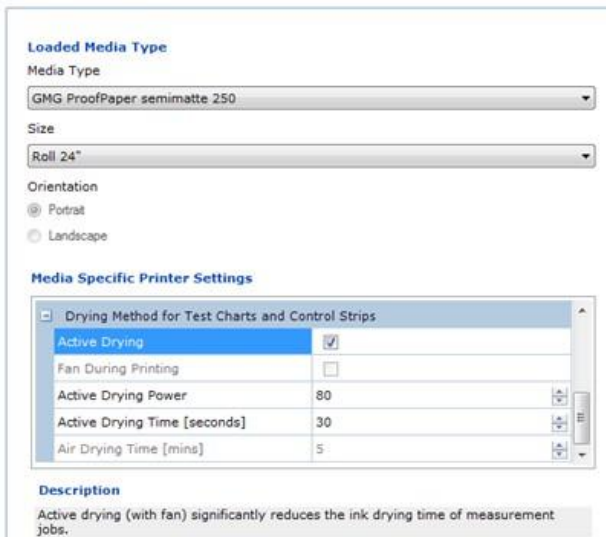
The consistency in drying calibration charts and control strips is reflected in the user interface of ColorProof. From version 5.7.3 onwards, there are no longer separate settings for autocalibration and for ProofControl Inline. Both are merged and the settings are identical for calibration and for verification.

The new developments are available with immediate effect for the following printers:

- Epson SureColor-P7000V/P9000V with Spectroproofer ILS30
- Epson SureColor-P7000/9000 STD (LLK) with Spectroproofer ILS30
- Epson SureColor-P6000/8000 with Spectroproofer ILS30
- Epson Stylus Pro x900/x890 with Spectroproofer ILS20/30

Active drying

Active drying means using a fan (air flow) to dry test charts and control strips before measurement. The settings are found in the media settings (Output > Printer > change media).



Up to now:

In the old implementation calibration charts were air dried for 5 minutes (per default). For control strips, the active drying started during printing. After printing, the job stayed in the same position and active drying lasted (per default) for another 30 seconds. As the last part of the job (control strip) was positioned under the print head, it was not dried enough and due to the fan during printing, the result was not consistent to the air drying of the calibration.

New in ColorProof 5.7.3:

With the improved active drying, the fan is no longer used during printing. After printing, the chart is moved to the drying area and the last part of the job is actively dried for 120 seconds (default) before it is moved further down to the measurement device. This makes sure the whole chart is evenly dried. This procedure is the same for inline-calibration and for inline media wedges. The same way of printing and drying ensures an even better match between calibration and verification and leads to a better proofing quality.

After updating to ColorProof 5.7.3, the improved active drying will be active and does not need further configuration.

X-Rite measurement device i1iSis 2 for calibration

All calibration sets that support i1iSis 1 can in ColorProof 5.7.3 additionally use the X-Rite measurement device i1iSis 2 for calibration. It concerns the calibration sets of the following printer and media:

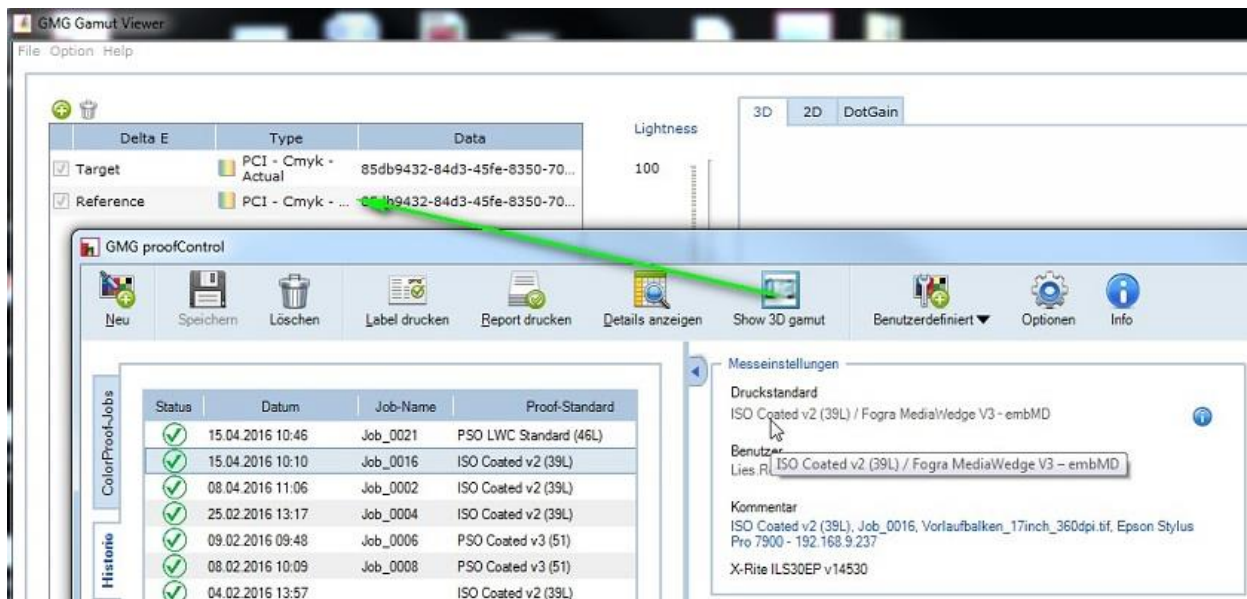
Epson SureColor P6000 / P7000 / P8000 / P9000	GMG gloss250 GMG matte140 GMG semimatte250 GMG semimatte250-OBA GMG semimatteLight	Canon iPF6300S / iPF8300S / iPFx300S / iPFx400S	GMG gloss250 GMG semimatte250 GMG semimatteLight
Epson Stylus Pro x880 / x890 / x900	GMG gloss250 GMG gloss260 GMG matte140 GMG NewsPaper57 GMG NewsProof76 GMG semimatte250 GMG semimatte250-OBA GMG semimatteLight	Canon iPF6300 / iPF6350 / iPF8300	GMG gloss250 GMG matte140 GMG NewsProof76 GMG semimatte250 GMG semimatteLight
Epson 4000 / 7600 / 9600	GMG gloss250 GMG matte140 GMG semimatte250 GMG semimatteLight	Canon iPFx4x0	GMG gloss250 GMG matte140 GMG NewsProof76 GMG semimatte250 GMG semimatte250-OBA GMG semimatteLight
Epson 4800 / 9800 / 7800 / 11880	GMG gloss250 GMG gloss260 GMG matte140 GMG NewsProof76 GMG semimatte250 GMG semimatteLight	Roland LEC330	Roland GPPG Roland UVCLP
Epson 4450 / 7450 / 9450	GMG NewsProof76	Epson Stylus Pro WT7900	Epson ClearProof Film Epson ClearProof Thin Film Epson CrystalClear Film Epson MetallicProof Film GMG gloss250 GMG semimatte250 GMG semimatteLight

ProfileEditor: Gamut Viewer Improvements

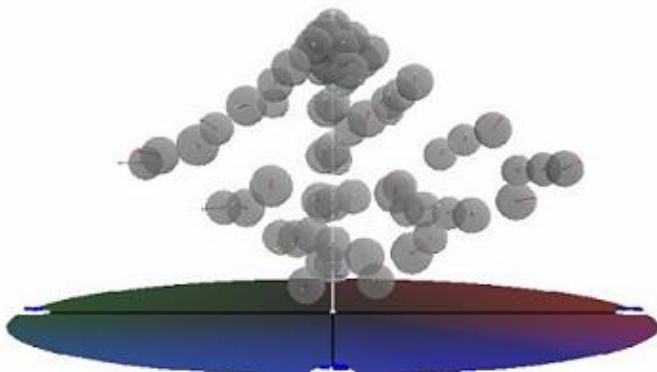
GamutViewer offers a large package of new features.

Import of ProofControl measurements

The measurement values of control strips can be visualized in the GamutViewer. To enable the graphical view of the ProofControl verification, the GamutViewer connection needs to be defined in GMG ProofControl > Options > Connections > standard: C:\Program Files (x86)\GMG\ProfileEditor\GamutViewer\GamutViewer.exe



The measured values (points) are displayed in reference to the tolerance (circle). The distance to the target value (middle of the circle) is displayed by a line. The measured values within the tolerance are marked in green. Failed verifications are marked outside the tolerance in red.



ICC & MXN Profiles

More new file types can be loaded in GamutViewer: ICC & MXN profiles. GamutViewer now supports: MX4, MX5, Gamut files, XML, OpenColor and ICC profiles, CGATS and text files.

Multiselect files

A selection of multiple files can be loaded at once in GamutViewer.

Add LAB Value

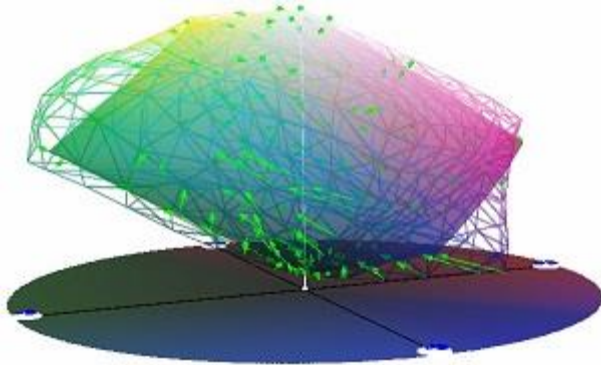
A single LAB value can be entered and displayed in GamutViewer.

Save and load configuration

GamutViewer contains some options in the menu to save the list of gamuts, profiles, ICC or PCI files and further configurations. This can be saved as .gml (gamut list) file. Gamut lists can be loaded manually or at the start up.

Overview of all dE-differences

Arrows in the 3D and 2D graphic view illustrate the delta-E difference between the color spaces.

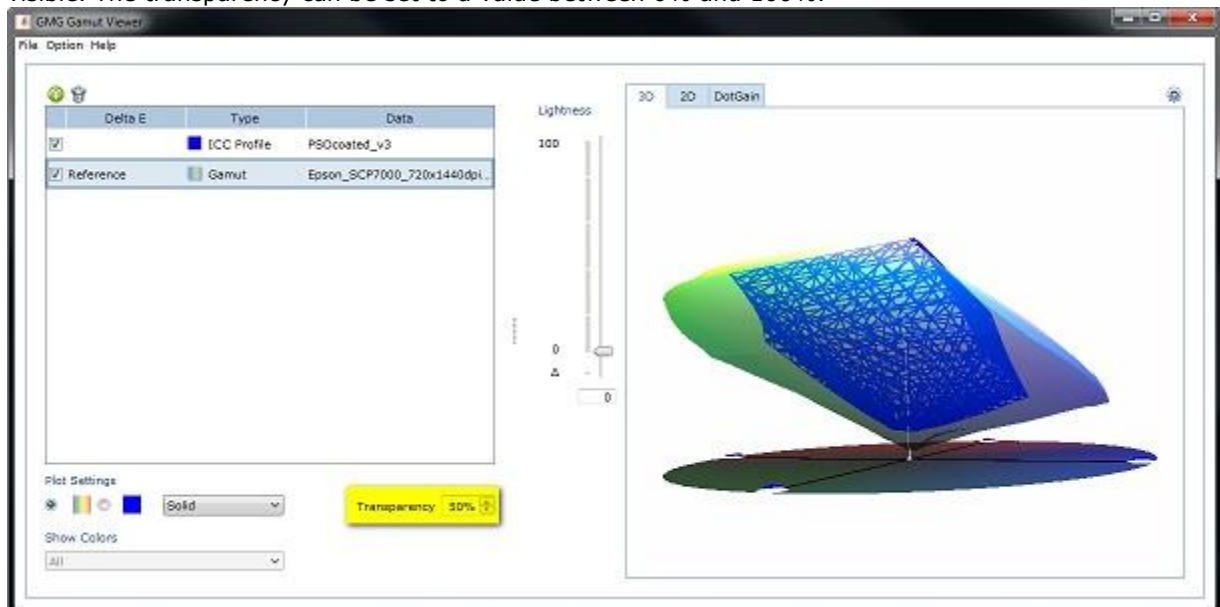


Show colors

You can display a selective view of only: Primaries / Secondaries / CMY Values / CMYK Values

Transparency

The solid view of a color space can be made transparent, so that a second smaller color space becomes visible. The transparency can be set to a value between 0% and 100%.

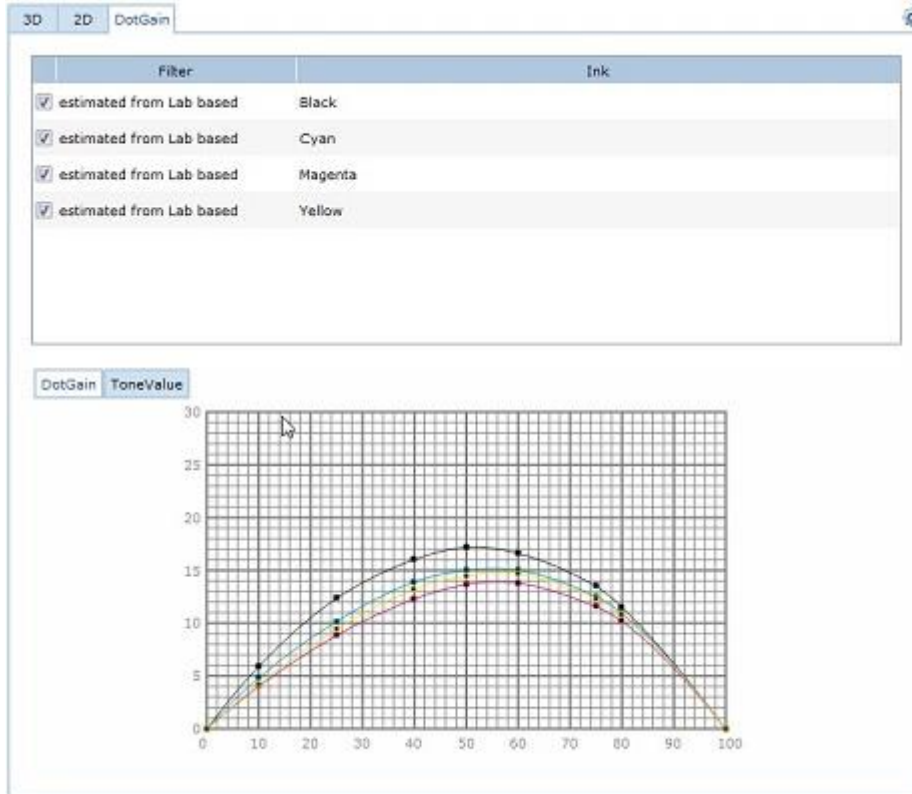


2D Projections

GamutViewer now enables several 2D projections: L/a, L/b, L/a.

DotGain

In the new DotGain tab the curves of the ToneValue and DotGain are visualized.



GamutViewer in Remote Desktop

GamutViewer can now be used in remote desktop and Server PCs. In case the graphic card does not support 3D acceleration, GamutViewer will switch to CPU rendering.

Localization of Epson SureColor-P Printer names for China and Japan

The model number of the SureColor P-series have been localized for the different regions.

- The Chinese models in ColorProof are: Epson SureColor P6050, P7050, P8050, P9050.
- The Japanese model numbers in ColorProof are: Epson SureColor P6080, P7080, P8080, P9080.

Resolved issues

The following technical issues have been resolved in ColorProof 5.7.3.442/443. Please note that the list describes the problem, not the solution.

Epson SureColor P-series cannot print on custom media

It was not possible to print on the Epson SureColor P7000 with a custom medium, custom calibration and custom ProofStandard configured in ColorProof. The error message "Failed to initialize printer" was displayed. GMG calibration sets were not affected. [61847, 61889, 62028]

DotProof/FlexoProof - Processing issue of 1-Bit LEN or 1-Bit TIFF files

In DotProof/FlexoProof 5.7.2.529/530 it sometimes occurred that at a certain point in time 1-Bit LEN or 1-Bit TIFF files were not processed anymore. This means that the hotfolders did not create new jobs anymore or that printed files were not cleaned up. The reason was that the memory consumption of the jobticket05.exe process increased with every new job until the memory used by the process exceeded the addressable total memory of the system. [61481, 61692, 61647, 61199, 61228]

White space after image in workflow job after 5.7.2 upgrade

In some cases, workflows that were updated to the version 5.7.2 produced jobs with a white space after the image (e.g. a gap of 6 meters) when the control strip was disabled. Newly created workflows were not affected. [60987, 61064]

SpotColor Editor – Import error: "Encountered an improper argument"

Even though spot colors were imported correctly, the error "Encountered an improper argument" was displayed. [60915, 62143]

French UI – Epson config page not reachable

On the ColorProof output tab the IP address in the right window pane is a hyperlink to the Epson config

page. This page could not be opened when the language in ColorProof was French. [60357, 60369]

Imposition proofer without license

When ColorProof was connected to a dongle with imposition proofer license (e.g. dongle of the dealer for installation and configuration), the imposition proofer remained visible in ColorProof, even after switching to a dongle without license for the imposition proofer (e.g. switch to user dongle). [58823, 59362, 60935]

AutoCalibrationWizard – Simultaneous calibration of multiple printers

Auto-calibrating multiple printers at the same time was not possible. [46949, 48868]

Epson SureColor P6000 – Calibration set and ProofStandard greyed out

Calibration sets and ProofStandards for GMG ProofPaper gloss 250 could not be added for Epson SureColor P6000. The items were greyed out in the database and could not be downloaded. [62124]

ColorProof installation - PC Admin name contains a blank character

The installation of ColorProof was aborted when the Windows administrator name contained a blank character, e.g. "Test User". [61807]

Pre-separated PostScript files - memory leak

Processing pre-separated PostScript files provoked a memory leak when the job did not contain all process channels e.g. a combination of CMY+spot+spot. Loading a PostScript file with one or more missing CMYK separations first consumed all RAM and consequently the cache until the PC did not respond anymore. [61781, 61671]

WAN-IFRA Newspaper 26v5 for Epson Stylus Pro 7800 and 9800

The WAN-IFRA Newspaper 26v5 ProofStandard was available for Epson Stylus Pro 4800, but missing for 7800 and 9800. [61736]

Epson SureColor P-Series – DB3 with special inks

A spot color channel mapped to white ink created a distorted and striped output on the Epson SureColor P7000. [61622]

Print PS EPS from history

It was not possible to print EPS files from the ColorProof history, even though the files were available in the backup folder. [61548]

Use embedded ICC Profile

The color management option to "*Use embedded ICC profile if Available, else Use the Following Profile*" did not work. The embedded ICC profile was not used. [61516]

SpotColor Optimization – Technical error

Starting the SpotColor Optimization through the menu bar: Database > spot color sets > optimize provoked an error: "*A technical error occurred*". The same option started by right-clicking the spot color set worked fine. [61326]

Moiré in Workflow jobs

In some cases workflow jobs showed moiré. [61096]

SpotColor Editor - Crash

SpotColor Editor closed unexpectedly when copy/pasting a lot of spot colors into a new spot color set. [60728]

Workflow (51L) with control strip for ILS25

Creating workflows using ProofStandards containing only M1 data in ProofControl standards was not possible with Canon imagePROGRAF series printers with embedded measurement device (ILS25). [60570]

Channel mapping ignored by OpenColor Workflow with DB3

Channel mapping was not applied to jobs generated by a workflow with an OpenColor ProofStandard and a custom spot color set (db3). The spot colors were taken from the db3 and the channel mapping rules were ignored. [60430]

Workflow with single line nesting and rotation

In some cases single line nesting in combination with rotation led to a wrong job size. [59857]

Job label settings not saved when switching between printers

When the job label settings were changed for printer A (paused) and immediately after you switched to printer B (paused as well), the job label settings were not saved. The workaround was to activate printer A after the changes, in this way the new settings were saved. [58785]

Extended paper tint (outer only) cuts image / PDF content

In jobs that used extended outer paper tint and had an image label set to the right side, the image was cropped by the amount of paper tint extension. [58278, 34746]

Processed 1-bit files not cleaned up

Processed 1-bit files were not deleted as defined in the cleanup settings in the workflow. [58242]

Option to switch printer to "not calibrated"

The ProofControl Inline setting to change the calibration set to "not calibrated" after a failed ProofStandard verification did not work. [58207]

Installation on D-drive in Win 10 – Calibration error

Calibration with the X-Rite i1 pro2 was not possible on ColorProof systems installed on the D-drive in Windows 10. [57634]

Calibration notification with wrong values

The calibration notification contained the values of the first iteration, instead of the values of the final iteration. This error only happened when the following both options were active: (1) System > General > E-mail system notifications > "Printer recalibrated (results report)", (2) System > General > Default view settings > "Close AutoCaliWizard after successful calibration". [56861]

Roland VS-300i – Layer "White only"

It was not possible to print white through the "White only" layer on the Roland VS-300i. A workaround was available. [56382]

Image processing "Scale to fit media"

The workflow functionality "Scale to fit media" for images larger than the paper size did not work in jobs containing label and/or control strips. [54844]

Imposition proofer on 32bit OS

The imposition proofer could not be used on 32bit operating systems (32bit printer driver and 32bit ColorProof installation). The jobs ended with the message: "*Unexpected end of printing*" [56489, 60097]

Print defects in PDF file with OpenColor Standard

Under some circumstances PDF Jobs with OpenColor Standard showed print defects. [60432, 61916]

Checksum of custom 5.5 profile changed

In some cases, the checksum of a custom profile had changed after the update of CP 5.5 to CP 5.7. [62184]

Epson with spectroproofer - Jobs with OC control strip

OpenColor-Jobs with (one or more remapped process channels and) an ILS20/30 control strip threw the following error: "*Internal error: Unexpected state for function call in module Missing_Dot [timestamp]*". The workaround was to deactivate the control strip. [61612, 62824, 62078]

Starter kit for Epson SureColor P7000/9000 – Photo black

No jobs with custom medium and custom calibration set could be printed on the Epson SureColor P7000/9000 with Epson Driver and Photo Black. [62292, 62398]

Epson SureColor P7000/9000 – Custom calibration set with Photo black

After duplicating the GMG calibration set "GMG driver – 10c matte black 720x1440 bi dir" (GMG ProofPaper matte 140) and changing the driver to photo black, it could not be used for printing. [62293]

GamutViewer - Error "file can not be loaded"

GamutViewer showed an error when it was opened through the option "Compare Gamut and Target values" in ProfileEditor. [62258]

Changes to original GMG spot color set due to duplicates

In some cases (e.g. duplicate of duplicate) original GMG spot color sets were changed. [60908]

End of Life

Please note, that we will no longer provide bug fixes, maintenance releases, workarounds, or patches for bugs found in 5.7.2.529/530 or older.

Build number

ColorProof Version 5.7.3.443 (64bit)

ColorProof Version 5.7.3.442 (32bit)

Tips and Tricks: ProfileEditor – Measurement M1/M2 of patches <10mm

With X-Rite i1 Pro 2 iO, it is technically not possible to perform M1 measurements of patches smaller than 10 mm in scan mode. The X-Rite implementation of M1 is that patches are measured twice: with UV-cut and with non-UV-cut. When the quality of the scan mode is not high enough, the device will automatically switch to patch mode. ColorProof will provide a warning when the scan mode cannot be used.

Questions? Feedback? Comments? Please, let us know!

With kind regards from Tübingen

Jochen Moehrke
Manager Customer Support