

GMG SupportNews

English edition 15/2016

June 14, 2016

Dear Sir or Madam,

Today we would like to inform you of the following topics:

Release of GMG ColorProof 5.8

- Release notes
- New Features
 - Support of OpenColor DotProof profiles (MXD)
 - Adobe PDF Print Engine 4.1
 - Support of 10c print mode for Epson SureColor P7000 Standard (LLK) and P9000 Standard (LLK)
 - SmartHotfolder - Improved usability
 - ProfileEditor - Gamutviewer - Load embedded Output Intent ICC
- Resolved issues
- End of Life
- Build number
- Tips & Tricks

Release of GMG ColorProof 5.8

Release date

ColorProof 5.8.0.461 has been released for use on 64bit operating systems today, Wednesday, June 15, 2016.

ColorProof 5.8.0.462 has been released for use on 32bit operating systems today, Wednesday, June 15, 2016.

License

ColorProof 5.0 - 5.7 → 5.8 New license required, chargeable

Supported OS

- Windows 10
- Windows 8.1
- Windows 8
- Windows 7
- Windows Server 2012 R2
- Windows Server 2008 R2

Download

[GMG ColorProof 5.8](#)

Installation instructions

1. Create an environment backup of your existing configuration (version 5.5 or newer).
2. Fully close your ColorProof, including the tray icon in the task bar.
3. Extract the file *GMG_ColorProof_5_8xx.zip*.
4. Double click the setup file *Install_CP5.bat* to run the installation.
5. Start ColorProof after the installation wizard is closed.
6. ColorProof is now updated/installed.

New features

Support of OpenColor DotProof profiles (MXD)

With OpenColor 2.0.5 and the module OpenColor DotProof GMG offers for the first time the calculation of DotProof profiles with spectral data in high quality, which enables a precise simulation of overprinting spot color behaviour in 1bit jobs. The OpenColor DotProof profiles (MXD) can be used in GMG DotProof 5.8 and GMG FlexoProof 5.8. For more information see [SupportNews 14/2016](#).

Licensing

The following licenses are required in order to use OpenColor DotProof profiles in GMG ColorProof:

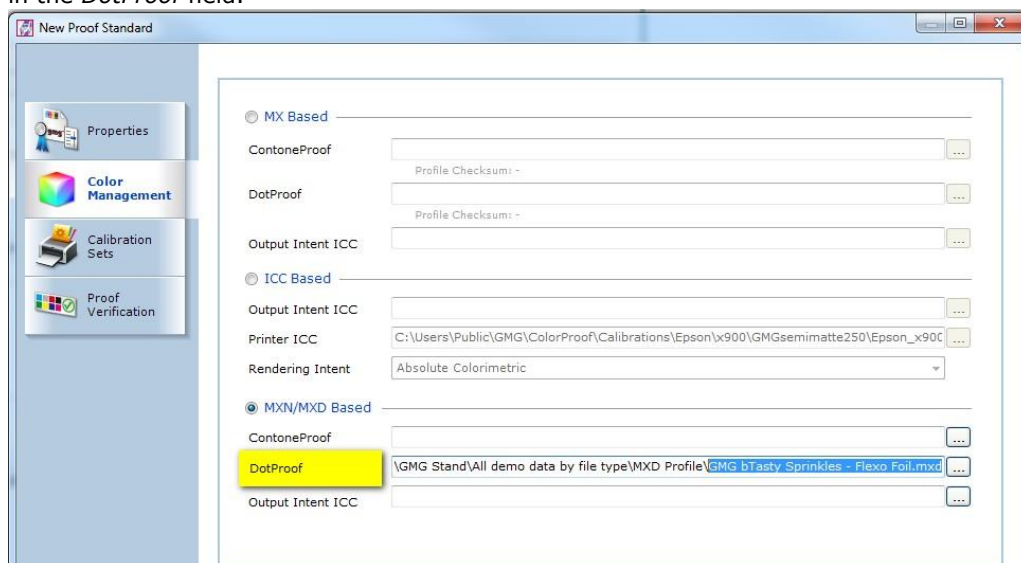
- GMG DotProof 5.8 or FlexoProof 5.8
- GMG OpenColor 2.0 Output Module

OpenColor DotProof profiles in DotProof/FlexoProof

The DotProof profiles, created in OpenColor, are saved in the MXD format. You can export OpenColor DotProof profiles and load them into a regular proof standard or use them as custom profiles in GMG DotProof/FlexoProof 5.8. A dynamic profiling of OpenColor DotProof profiles is not supported.

Create a ProofStandard with OpenColor DotProof profile:

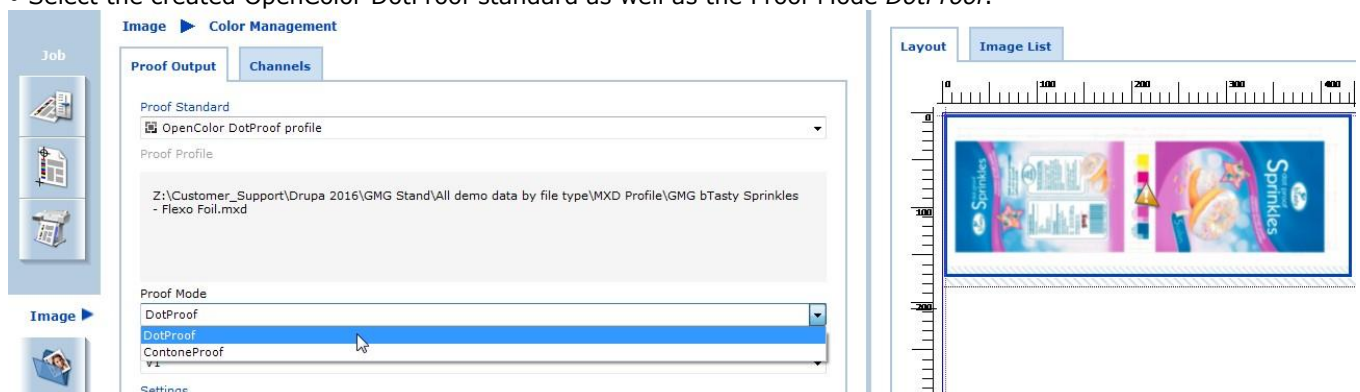
- *ColorProof > Database > Add custom ProofStandard*
- On the *Color Management* tab: Choose *MXN/MXD based* and link the exported OpenColor MXD profile in the *DotProof* field.



- On the *Proof Verification* tab you can choose a default control strip if it already exists (or skip, and execute this later).

Create a manual Job with OpenColor DotProof profile:

- Select the created OpenColor DotProof standard as well as the Proof Mode *DotProof*.



- Verify the screening parameters.



- You can now print the job.

Adobe PDF Print Engine 4.1

With GMG ColorProof 5.8, the Adobe PDF Print Engine 3.8 has been updated to version 4.1.

New Features of the Adobe PDF Print Engine 4:

- Mercury RIP Architecture enhanced with Tile Parallel Processing – maximum rendering efficiency for Large Format Printing, Computer to Plate Printing, and Digital Production Printing
 - Smoothest shades ever - seamless gradient blends, for any length
 - Extended spot color handling - Up to 127 color channels
 - Optimized rendering for the latest updates of Adobe InDesign CC, Illustrator CC and Photoshop CC
- See [extended list of features](#)

Support of 10c print mode for Epson SureColor P7000 Standard (LLK) and P9000 Standard (LLK)

ProofStandards for Epson SureColor P7000 Standard (LLK) and P9000 Standard (LLK)

ProofStandards	Media	Print mode
ISO Coated v2 (39L)	GMG Proofpaper semimatte 250 GMG Proofpaper semimatte light	GMG Driver - 10c - Photo Black - 720x1440 dpi
PSO Coated v3 (51)		
PSO Uncoated ISO12647 (47L)		
PSO LWC Improved (45L)		
PSO LWC Standard (46L)		
JapanColor 2011 Coated		
GRACoL 2006 Coated Comm. Sheet (#1)		
SWOP Publication Sheet (#3)		
SWOP Groundwood (#5)		
GRACoL 2013 Coated (CRPC 6)		
GRACoL 2013 Uncoated (CRPC 3)		
SWOP 2013 C3 (CRPC 5)		
SWOP 2013 C5		
PSO coated v3 (51)	GMG Proofpaper semimatte 250 OBA	GMG Driver - 10c - Photo Black - 720x1440 dpi
PSO uncoated v3 (52)		
ISO Coated v2 (39L)	GMG Proofpaper Gloss	GMG Driver - 10c - Photo Black - 720x1440 dpi
PSO Coated v3 (51)		
PSO LWC Improved (45L)		
JapanColor 2011 Coated		
GRACoL 2006 Coated Comm. Sheet (#1)		
GRACoL 2013 Coated (CRPC 6)		

Additional conversion for Epson Stylus Pro x900 profiles to Epson SureColor-P7000/P9000 Standard (LLK)

Contone profile (MX4) can be converted in the ProfileEditor as follows: *ProfileEditor: Tools > Convert Profile...*

The following additional conversion is offered for GMG ProofPaper semimatte 250:

- Conversion of Epson Stylus Pro x900 10c 720x1440 profiles to Epson SureColor P7000/9000 Standard (LLK) 10c 720x1440

In case you are using specific noise values in a profile, we recommend to decrease the values. When converting MX4 Epson x900 proof profiles to the color space of the SureColor P printers, we found that a reduction of the noise frequency by ca. 25% leads to a most comparable result. The intensity does not need to be adjusted.

Example: PSO LWC Improved 45L - GMG ProofPaper semimatte 250

	Epson Stylus Pro x900		Epson SureColor SC-P	
	CMY	K	CMY	K
Frequency	15	15	10	10
Intensity	2	2	2	2

Example: PSO LWC Standard 46L - GMG ProofPaper semimatte 250

	Epson Stylus Pro x900		Epson SureColor SC-P	
	CMY	K	CMY	K
Frequency	20	20	13	13
Intensity	2	2	2	2

Additional conversion of Epson Stylus Pro x900 spot color sets to Epson SureColor-P P7000/P9000 Standard (LLK)

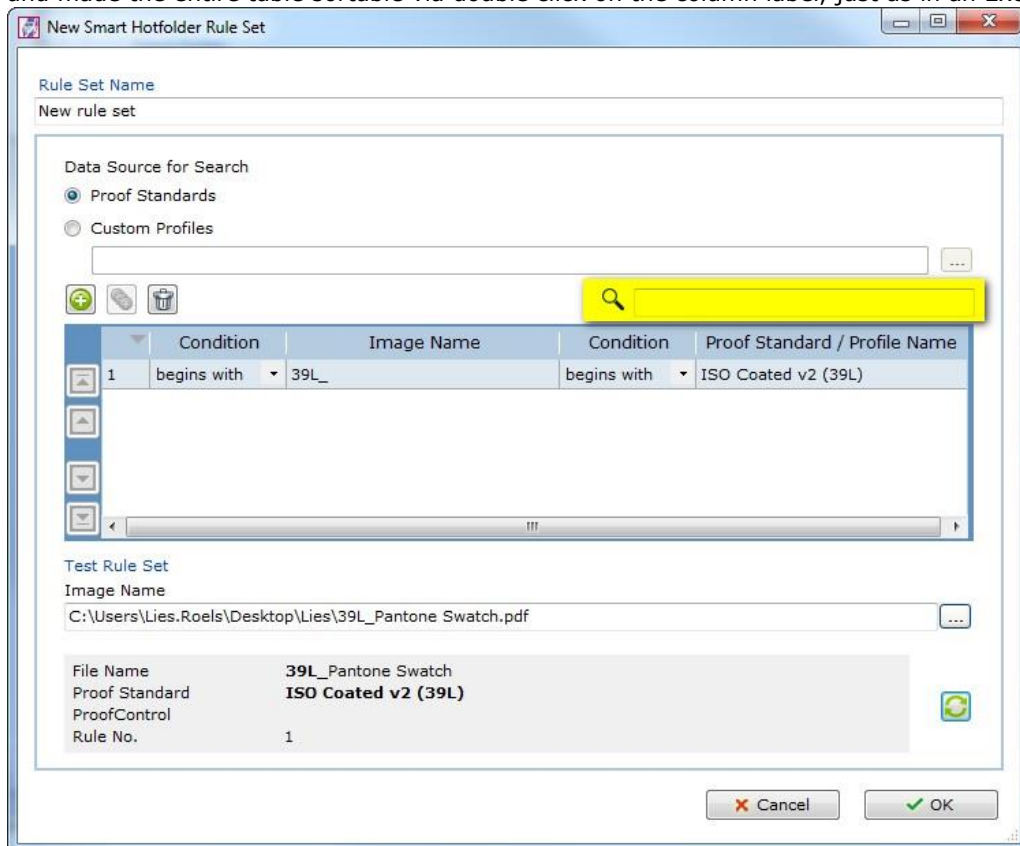
Spotcolor database (db3) can be converted in the SpotColorEditor as follows: *SpotColorEditor: Measure > Convert...*

The following additional conversion for GMG ProofPaper semimatte 250 is offered:

- Conversion of Epson Stylus Pro x900 10c 720x1440 spot color sets to Epson SureColor P7000/9000 Standard (LLK) 10c 720x1440

Smart Hotfolder - Improved usability

To improve the sorting and viewing of Smart Hotfolder rule sets, we added a free text search function and made the entire table sortable via double click on the column label, just as in an Excel file.



ProfileEditor - Gamutviewer - Load embedded Output Intent ICC

The embedded ICC profile of PDFs, JPEGs and TIFF files can be loaded into GamutViewer. Choose: *Add File > Select the image > The embedded output intent ICC will be displayed as gamut file.*

Resolved issues

The following technical issues have been resolved in ColorProof 5.8.0.461/462 Please note that the list describes the original problem, not the solution.

Jobticket hotfolder (XML) – No jobs created

Jobticket hotfolders did not create jobs when channel mapping rules were involved. [62959, 63727]

Imposition proofer – Scaled output

The output of the imposition proofer was scaled in feeding direction (ca. 1cm/m). [59619, 60742]

MXN job – Distorted output

Using OpenColor strips in MXN jobs with DB3 based spot color channels led to a distorted output. [63671]

MXN job - Wrong preview

The preview of one specific job with MXN ProofStandard was wrong. The output was correct. [61811]

Workflow creation – ISO Newspaper (26 v4)

Print settings were greyed out when creating a new workflow for ISO Newspaper (26 v4). [62993]

No job preview for single separation

There was no job preview when only one separation was loaded. [62562]

Centering of images on sheet media

The nesting option to center single images per job was not applied for large images (larger than A4). The same option in a manual job was working correctly. [60642]

ProofControl Inline – Job with two image control strips

There was an issue when a ProofControl Inline job contained two images with each an image control strip. ProofControl Inline created during the measurement of the second control strip a text file with a different filter stated in the header. [63344]

SpotColorEditor - Crash

GMG SpotColorEditor crashed when duplicating a large spot color set. [63134]

ProfileEditor – Saving selective color corrections

When closing unsaved selective color corrections, the warning: "*Save changes to MX4?*" was missing. [62877]

End of Life

Please note, that we will no longer provide bug fixes, maintenance releases, workarounds, or patches for bugs found in 5.7.3.469/470 or older.

Build number

ColorProof Version 5.8.0.461 (64bit)

ColorProof Version 5.8.0.462 (32bit)

Tips and Tricks

Use of 1bit control strip for OpenColor DotProof Standards

A CMYK DotProof strip, like *Ugra/Fogra Media Wedge V3.0*, can only be used when the OpenColor DotProof profile (MXD) contains all CMYK channels. Moreover, the channels of the profile require exactly these names: *Cyan, Magenta, Yellow and Black*.

Questions? Feedback? Comments? Please, let us know!

With kind regards from Tübingen

Jochen Moehrke
Manager Customer Support