

GMG SupportNews

English edition 11/2016

May 9, 2016

Dear Sir or Madam,

Today we would like to inform you of the following topics:

Release of GMG OpenColor 2.0.4

- ✓ Version notes
- ✓ New features
 - Module OpenColor Separation Option
 - Pantone new 112 colors
 - New Proofing Condition for Epson SureColor P7000V and GMG Matte 140
 - New ISO Coated v2 (39L) characterization
 - Rename Inks
- ✓ Resolved issues
- ✓ End-of-Life
- ✓ Build Number
- ✓ Tips and Tricks

Release of GMG OpenColor 2.0.4

Release date

GMG OpenColor 2.0.4.21 has been released today, Monday, May 9, 2016.

Recommendation

We recommend that all users of GMG OpenColor upgrade to OpenColor 2.0.4.21

License

OpenColor 1.x → OpenColor 2.0.4 New license required, chargeable
OpenColor 2.0 → OpenColor 2.0.4 No new license required

OpenColor Editions & Licensing

- Standard Edition: Allows the connection to 1 ColorProof
- Plus Edition: Allows the connection to more than 1 ColorProof (previous: Enterprise Edition)

A GMG OpenColor Output License 2.0 is required for each GMG ColorProof instance – 5.6 or higher – to be able to process GMG OpenColor (MXN) profiles. This proofing option can be purchased independently of a GMG OpenColor Edition.

Download

[OpenColor 2.0.4](#)

Installation instructions

1. Close all GMG applications.
2. Extract the zip archive and run the installation.

The installation instructions are valid for new and update installations. Before updating to a new OpenColor version you can backup the folder containing all configuration data
C:\ProgramData\GMG\OpenColor\DatabaseV2 to a new location.

Note: GMG OpenColor 2.0.4 is compatible to GMG ColorProof 5.6 or newer. If GMG ColorProof 5.5.x and older is used, an upgrade of GMG ColorProof to the latest available version is required in order to enable 'dynamic profiling'.

New features

Module OpenColor Separation Option - chargeable module

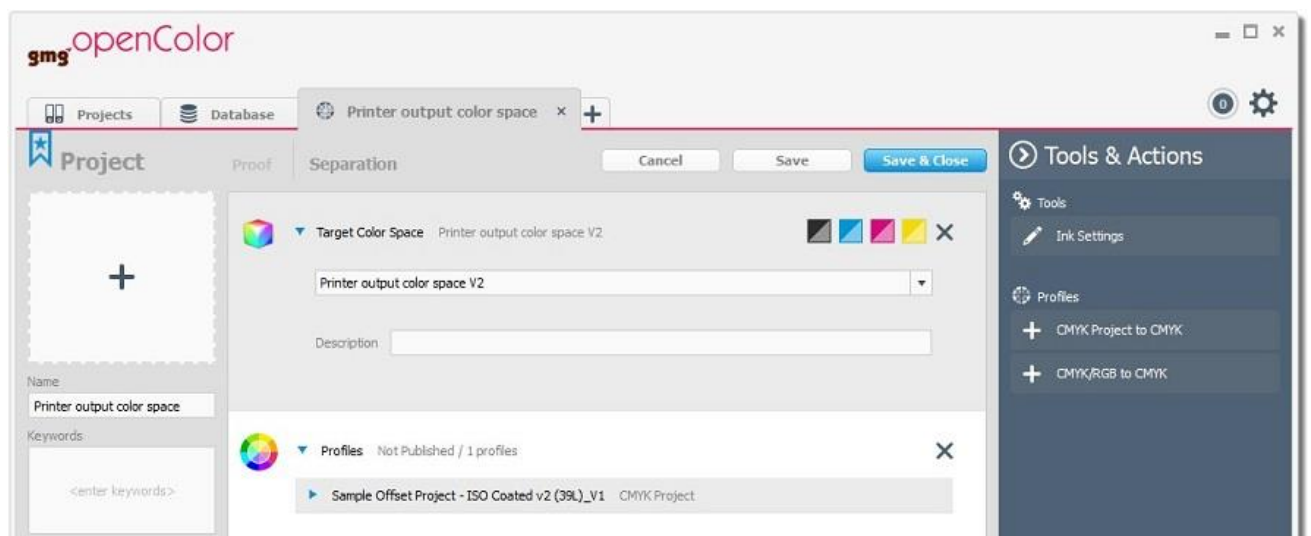
OpenColor offers a new functionality to create and export separation and conversion profiles to use in GMG ColorServer (MX4) and the Photoshop plugin GMG ColorPin (MX4x).

Following a good press characterization and a matching proof, the next step is to be able to create corresponding separation profiles for converting documents e.g. from ISO Coated v2 or RGB to your printing condition, or from one custom printing condition to another.

As input color space, an existing OpenColor Proofing project or ICC standard profiles (e.g. 39L, 51, etc.) can be used. The OpenColor proofing profile is the output color space of the separation profile. RGB-to-CMYK profiles as well as CMYK-to-CMYK profiles can be generated.

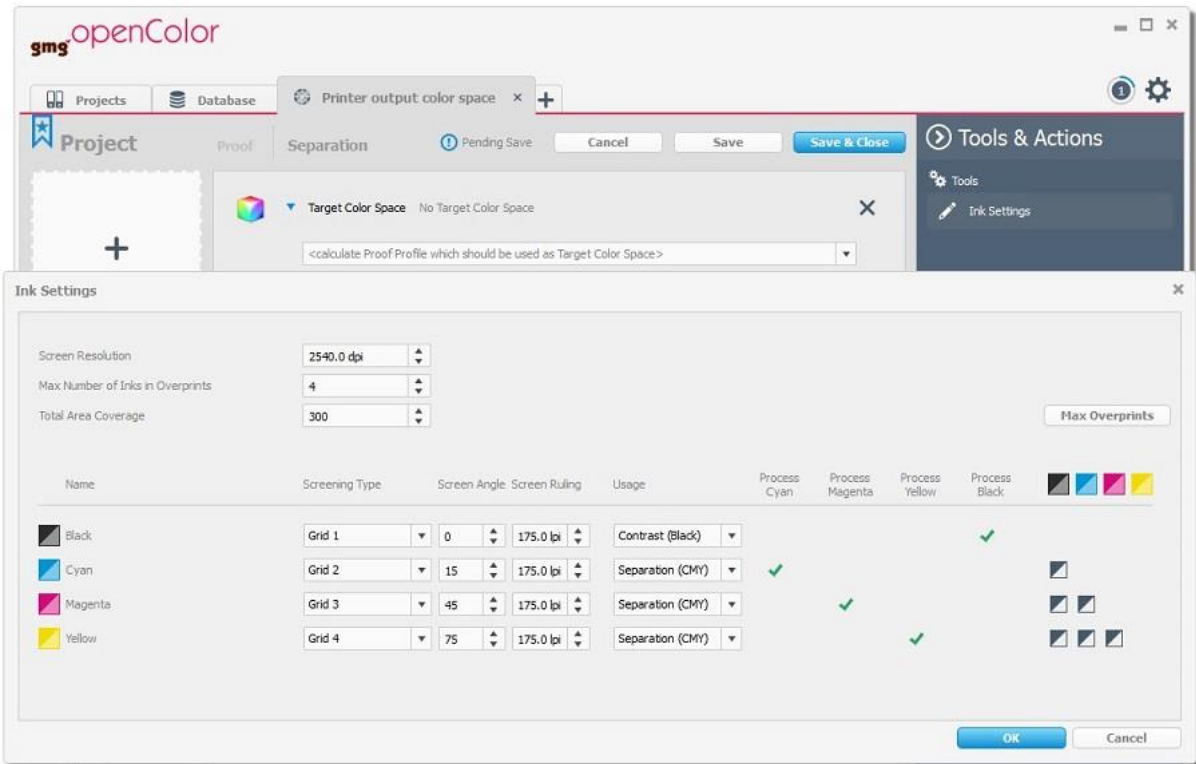
Possible conversion profiles:

- CMYK ICC profile → CMYK data of existing OpenColor project
- Existing OpenColor proofing project as CMYK data → CMYK data of existing OpenColor profile
- RGB ICC profile → CMYK data of existing OpenColor profile

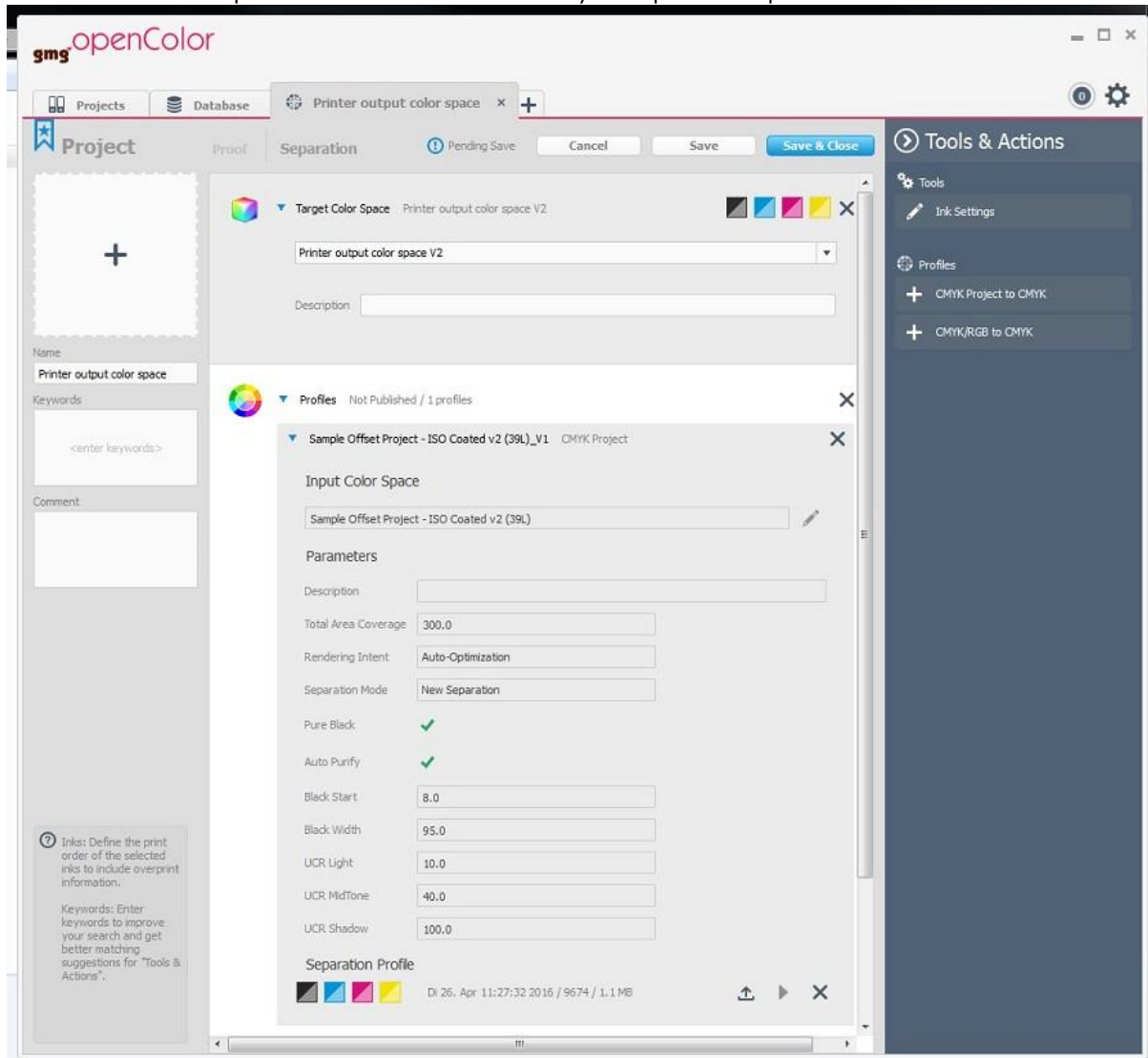


Example: ISO Coated v2 (39L) to existing CMYK printer output color space

1. Open existing OpenColor project with the characterization data and a proofing profile of your printer output color space. Note: Only calculated and published profiles can be selected as output color space.
2. Go to the "Separation" tab
3. Complete the ink settings of your output color space and save.



4. The selected project is now set as Target Color Space for the separation profile.
5. Go to "Tools & Action" and click "CMYK Project to CMYK".
6. Select the "Sample Offset Project – ISO Coated v2 (39L)" project as input color space.
7. Adjust the parameters as desired: TAC, rendering intent, separation mode, black start, etc. The default values correspond to the characterization of your input color space.



8. Click the "play" button to calculate the profile.
9. Export as MX4 (ColorServer profile) or as MX4x (ColorPin profile).

For more explanation, please consult the [OpenColor manual](#), chapter 9.

License

With OpenColor Standard the separation module is a chargeable module. With the Plus Edition this new functionality is included.

PANTONE Plus - 112 new spot colors

Pantone has introduced 112 new spot colors to reflect new possibilities of design, see [press release of Pantone](#). To provide our customers with the latest developments in our software, we included the corresponding characterizations in this version.

The new colors are included in the following spot color sets in OpenColor 2.0.4:

- Pantone Plus Coated
- Pantone Plus Uncoated

New Proofing Condition for Epson SureColor P7000V and GMG Matte 140

The following new proofing condition is available in the database of OpenColor 2.0.4.

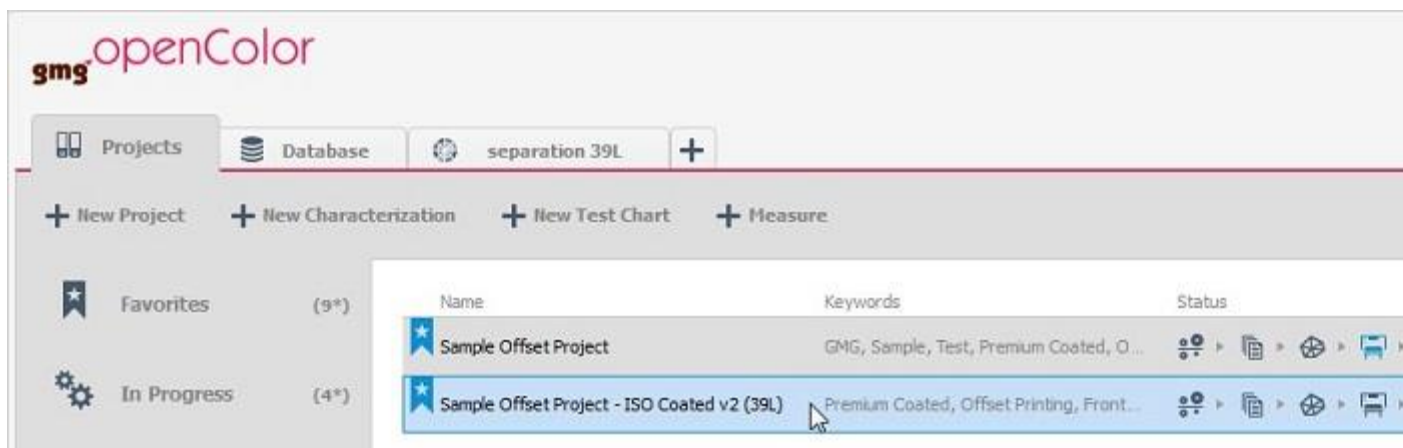
Printer	Media	Print mode
Epson SureColor P7000V	GMG Proofpaper matte 140	GMG Driver - 10c - Matte Black - 720x1440 dpi

Note: In the current release of OpenColor the inkset is erroneously listed as "Photo Black".

New ISO Coated v2 (39L) characterization

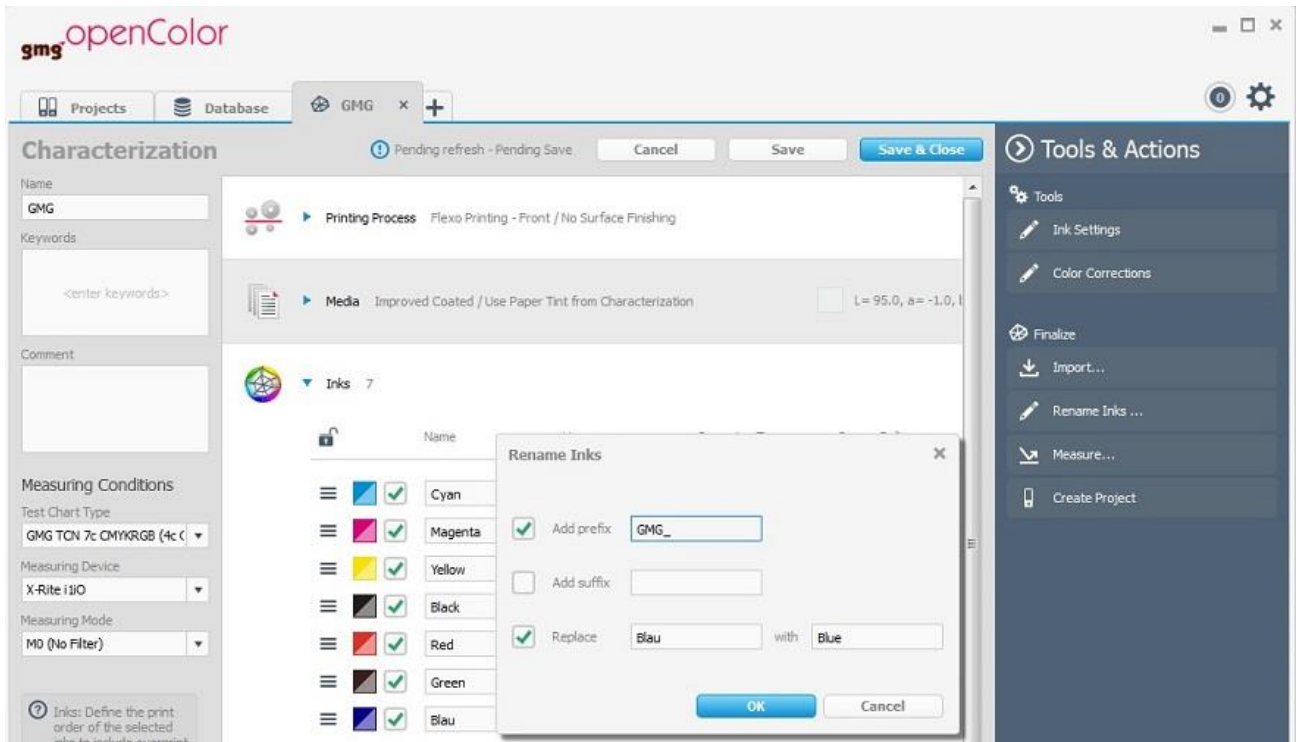
This version comes with spectral characterization data for ISO Coated v2 (39L) and a corresponding sample project. The project can be used for proofing of Offset+ spot colors to ISO Coated v2 (39L).

In newly installed OpenColor applications, the ISO Coated v2 (39L) project with spectral characterization will be present. In updated systems the old and new project will be available.



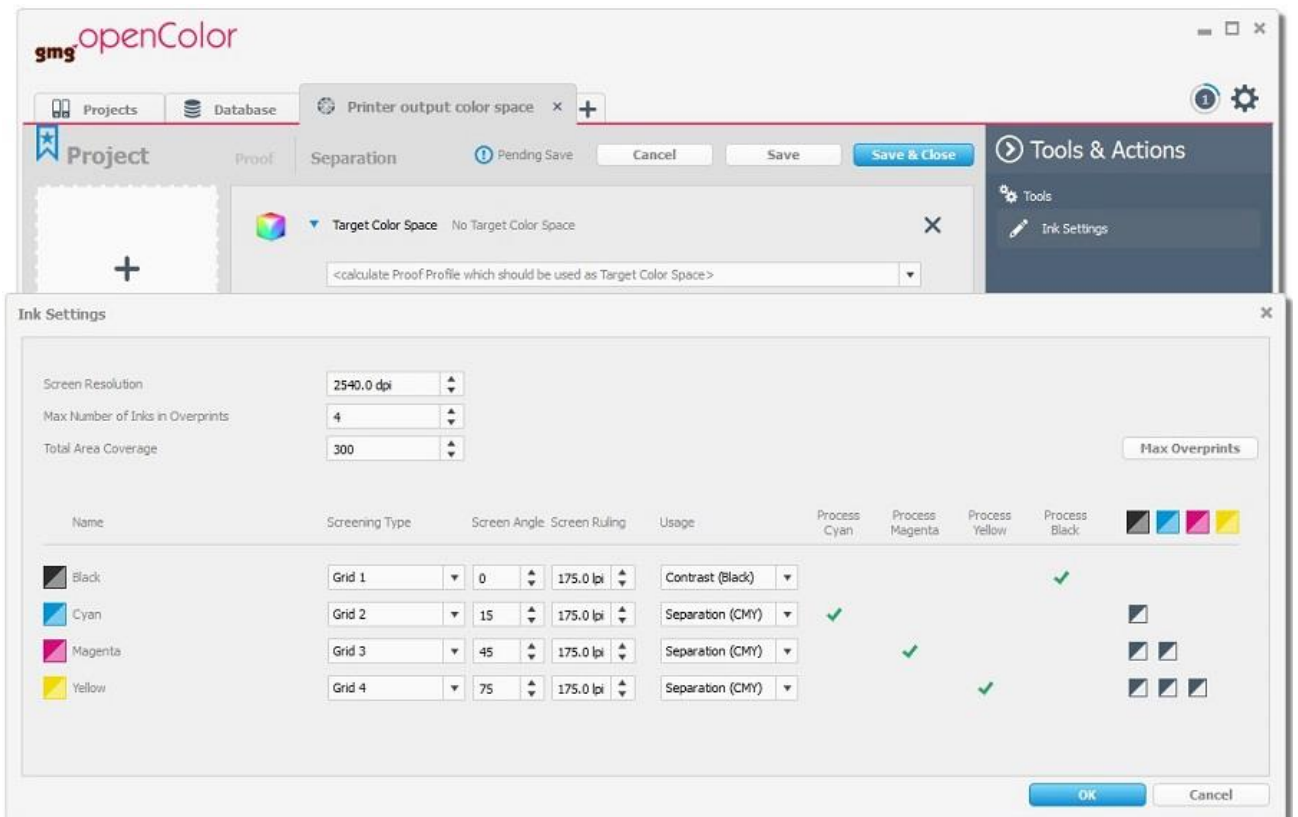
Rename Inks

With OpenColor 2.0.4 we included a batch-renaming with the additional possibility to add a prefix or suffix to all colors within a selected library.



Ink Settings

In the enhanced ink settings further information about your printing condition is captured. The settings are required for creating separation profiles and for new test charts.



Resolved issues

The following technical issues have been resolved in OpenColor 2.0.4. Please note, that the list describes the problem, not the solution.

Overprint wrong for mxn profile with ink sequence change

In one case overprint calculation was wrong when the print order changed. [56139]

OpenColor Crash – Job with dynamic profile and „use white Ink“

OpenColor stopped working when a workflow job with dynamic profile and activated „use white ink“ option was opened in ColorProof. As a workaround static profiles could be used. [57706]

„Error processing“

A specific OpenColor job with dynamic profile could not be processed in ColorProof. When opening the Job properties, OpenColor crashed. [60106]

Unclear error message when color channel is not found.

When a printing ink could not be found in the selected OpenColor standard, the following message was displayed in the ColorProof job list: *"OpenColor service: Error processing"*. After deactivating the unrecognized color channels, the job could be printed. [59262]

OpenColor Crash after deleting test chart

After creating and saving a new test chart and consequently deleting it, OpenColor crashed. [60719]

Dynamically published projects – Profile recalculated

Profiles which already had already been calculated in a published project, were calculated again for every new ColorProof job. [59366]

Color correction – Outlier remains in profile

Outliers that were removed in the ink gradation curve using the color corrections option, were not displayed in the user interface anymore. They were however not removed from the profile.

End-of-Life

Please note, that we will no longer provide bug fixes, maintenance releases, workarounds, or patches for bugs found in GMG OpenColor 2.0.3.14 or older.

Build number

GMG OpenColor 2.0.4.21

Tips and Tricks

First Start of OpenColor 2.0.4

During the first start existing characterizations and spot color databases will be opened and all ink preview colors will be recalculated. This can take some minutes and only happens at the first start after update.

Duplicating 'Pantone Plus Coated'

When the spot color set 'Pantone Plus Coated' is duplicated, the paper tint is missing. OpenColor gives a warning. Please import the paper tint over the user interface.

Questions? Feedback? Comments? Please, let us know!

With kind regards from Tübingen

Jochen Moehrke
Manager Customer Support