

Technical Configuration Guide: Roland Versa Works Media Explorer

Version 1.0

October 2010

© 2010 GMG GmbH & Co. KG

GMG GmbH & Co. KG

Moempelgarder Weg 10

72072 Tuebingen

Germany

This documentation and described products are subject to change without notice. GMG GmbH & Co. KG makes no guaranty as to the accuracy of any and all information and procedures described in this documentation. To the maximum extent permitted by applicable law, in no event shall GMG GmbH & Co. KG or the author be liable for any special, incidental, direct, indirect, or consequential damages whatsoever (including, without limitation, injuries, damages for data loss, loss of business profits, business interruption, loss of business information, or any other pecuniary loss) arising out of the use of or inability to use the software or this documentation or the provision of or failure to provide Support Services, even if GMG GmbH & Co. KG has been advised of the possibility of such damages.

Reprinting and copying, as well as other duplication including excerpts of this document, are prohibited without the written permission of GMG GmbH & Co. KG. This also applies to electronic copies.

GMG, the GMG Logo, and GMG product names and logos are either registered trademarks or trademarks owned by GMG GmbH & Co. KG.

All brand names and trademarks are the property of the respective owner and are expressly recognized as such. If brand names, trademarks, or other material are used without the permission of the respective owners, we request appropriate notification. We will immediately stop use of said items.

PANTONE® colors displayed in the software application or in the user documentation may not match PANTONE identified standards. Consult current PANTONE color publications for accurate color. PANTONE®, PANTONE® Goe™ and other Pantone, Inc. trademarks are the property of Pantone, Inc., © Pantone, Inc., 2007. Pantone, Inc. is the copyright owner of color data and/or software which are licensed to GMG GmbH & Co. KG to distribute for use only in combination with GMG ColorProof, GMG DotProof® and GMG FlexoProof. PANTONE color data and/or software shall not be copied onto another medium or hard disk unless as part of the distribution of GMG ColorProof, GMG DotProof® and GMG ColorProof.

Microsoft and Windows are registered trademarks of Microsoft Corporation in the United States and/or other countries.

X-Rite is a registered trademark of X-Rite, Incorporated. Logo CMM is a registered trademark of X-Rite, Incorporated. HP, Hewlett-Packard, and Designjet are registered trademarks of Hewlett-Packard Company. Epson, Epson Stylus, and Epson Stylus Pro are registered trademarks of Seiko Epson Corporation. UltraChrome is a trademark of Epson America, Inc. Nexus is a trademark of Artwork Systems N.V. Adobe and Photoshop are either registered trademarks or trademarks of Adobe Systems Incorporated in the United States and/or other countries. Canon is a registered trademark of Canon Inc.

Last update of this documentation: 2010-10-19

Table of Contents

1	About this guide	4
2	Overview Media Explorer	5
3	Import media files	6
4	Edit print quality settings	7
5	Edit printer queues	9

1 About this guide

This guide describes how you set up the Roland Versa Works software to work properly with GMG SmartProfiler and GMG ColorServer.

It will describe how to edit the **print quality** settings in the **Media Explorer** and how to set up the print **queue** as well.

The Media Explorer is a standard module of Roland Versa works where you can manage used media in terms of **resolution**, print head configuration, **print speed** etc. You should have basic knowledge about the operation with Roland Versa Works.

Note: Please consider the Roland **online help** or **user manual** to adjust other settings of the Roland Versa Works Software.

2 Overview Media Explorer

The **Media Explorer** contains all media types which are provided by the driver. The media will be loaded into the system after the driver was installed properly.

By selecting a media the properties will be shown on the right of the window. Please follow the instruction below in order to prepare the media setting to work in conjunction with **GMG SmartProfiler**.

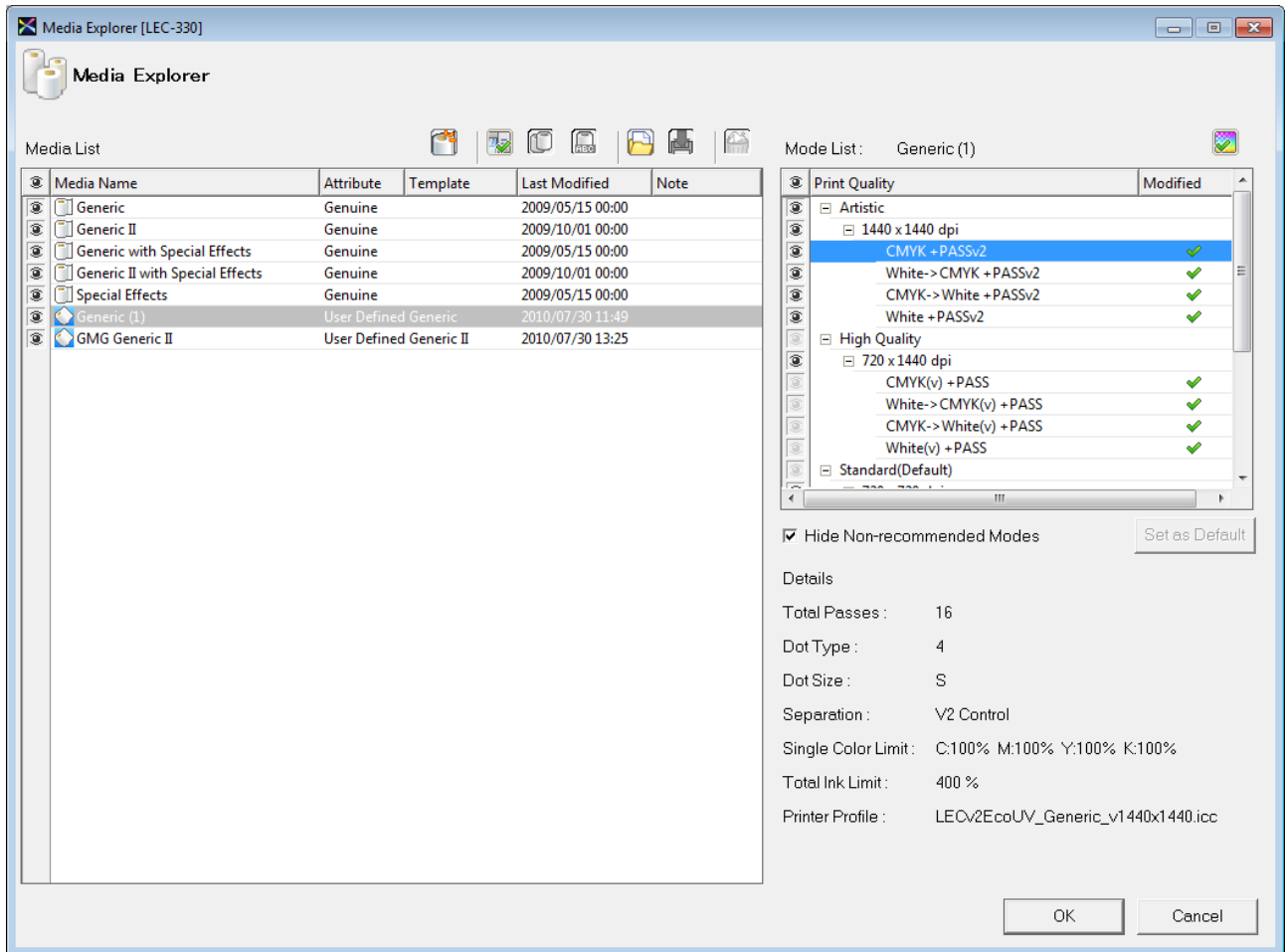


Fig. 1 Media Explorer from Roland Versa Works

3 Import media files

The prepared media files (*.rml) contain native Roland VersaWorks Media files which have been modified to work seamlessly with **GMG SmartProfiler**. These Media files are available for the following printer models.

- **VersaUV LEC Series**
- **VersaCAMM VS Series**
- **VersaCAMM SP-i Series**

Different paper grades were prepared for these printer series. Please take into consideration that other paper grades might not match to these settings and issues may occur. In these cases please follow the steps 4 to 5 to prepare your specific Media file which fits to the used paper grade.

Please find the following paper grades supported for the different Roland Printer series, the files to import contain “**GMG**” in the Media name to distinguish between the imported and the native media files of **Roland VersaWorks** :

- **VersaUV LEC Series**
 - Generic
 - Generic II
 - Generic with Special Effects
 - Generic II with Special Effects
- **VersaCAMM VS Series**
 - SV-GG : Hi Gloss PVC Gray Glue
 - GPPG : White Glossy Photo Paper
 - GVWG : Monomeric Calendered Self Adhesive Vinyl
 - GVWG [MT] : Monomeric Calendered Self Adhesive Vinyl
- **VersaCAMM SP-i Series**
 - SV-GG : Hi Gloss PVC Gray Glue
 - GPPG : White Glossy Photo Paper
 - GPPM : Photo Matte Paper
 - GVWG : Monomeric Calendered Self Adhesive Vinyl

How to import the media files

Follow the procedure below to load a Roland Media file into the **Media Explorer** window.

1. Click **Media - Media Explorer**. The **Media Explorer** window appears.
2. Click the **Load from File** icon.
3. Select the rml file to be loaded, and then click **Open**.
4. If the rml file includes information of multiple media, select the media to be loaded from the list, and then click **OK**.
The selected media is registered to the **Media Explorer** window.
5. Click **OK** to close the **Media Explorer** window.
6. Be sure to click **OK**. If you click **Cancel**, the window will close and the registration of media will be cancelled.

Note: You cannot load a media if there is another media with the same name.

4 Edit print quality settings

How to edit the print quality settings

7. Select in the **media list** the media which you want to prepare for GMG SmartProfiler.
8. Click with the right mouse on the media and create a duplicate of the media.
9. Please save media with correct media name and select the media in the **Media List**.
10. Navigate to **Mode List** and select the **Print Quality** which would like to edit e.g. **Artistic**.
11. Click on **+** to expand the different resolution options, e.g. **1440 x 1440 dpi**.
12. Double click on the **print head configuration** which you would like to prepare for use with GMG SmartProfiler e.g. **CMYK+PassV2** (See also Fig. 01).
13. Navigate to **Calibration Settings** and click **Print Chart** (Fig. 02).
14. Enter for each ink the **Single Color Limit** of 100%.
15. Navigate to **Total Ink Limit** and click on **Set Ink Limit**.
16. Enter 400% as **Total ink** on **Max. Ink Limit**
17. Click **OK** to save the setting and to close the window.
18. Please repeat all steps for **Media** which you would like to profile with GMG SmartProfiler.

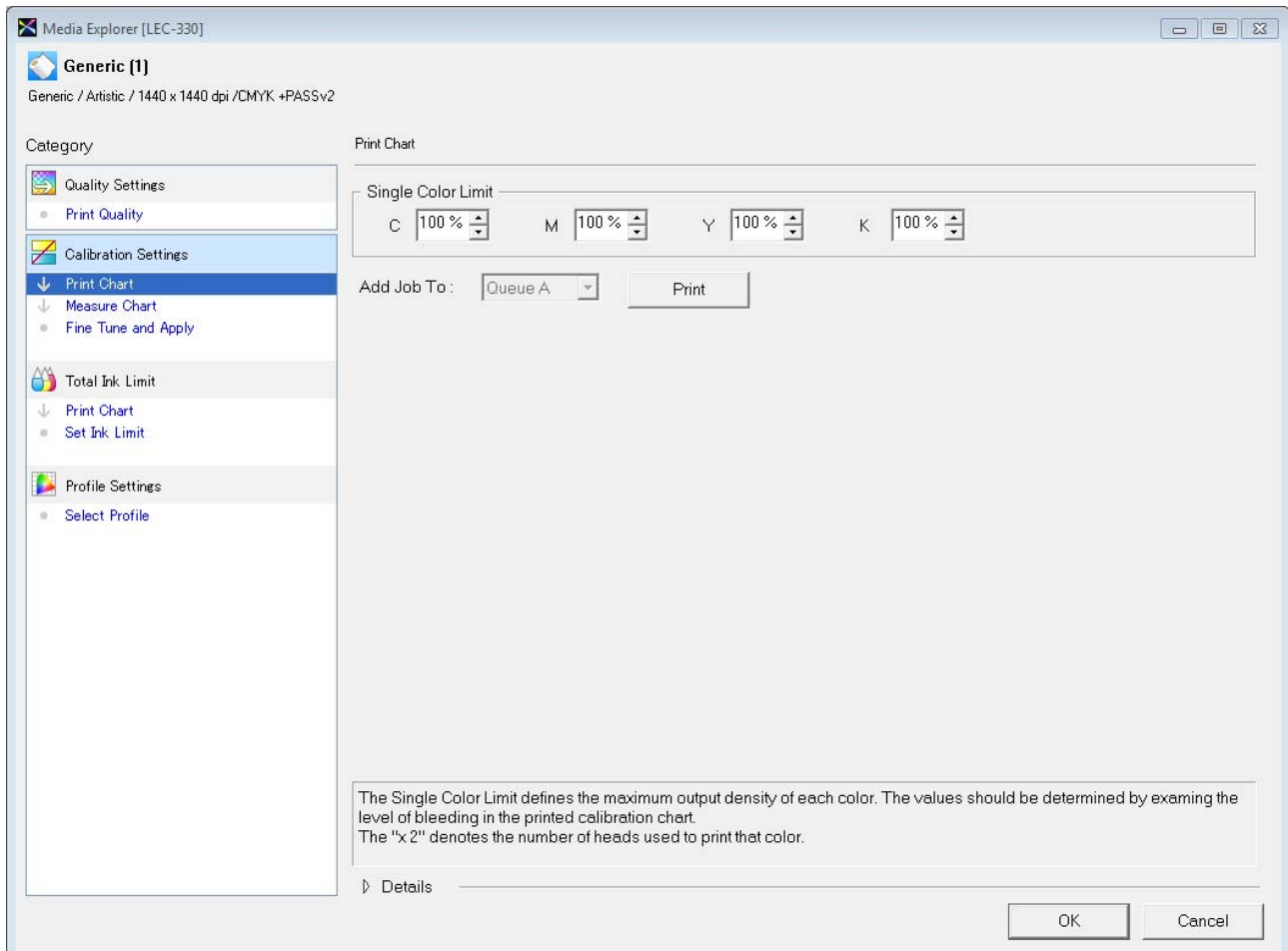


Fig. 2 Calibration Settings

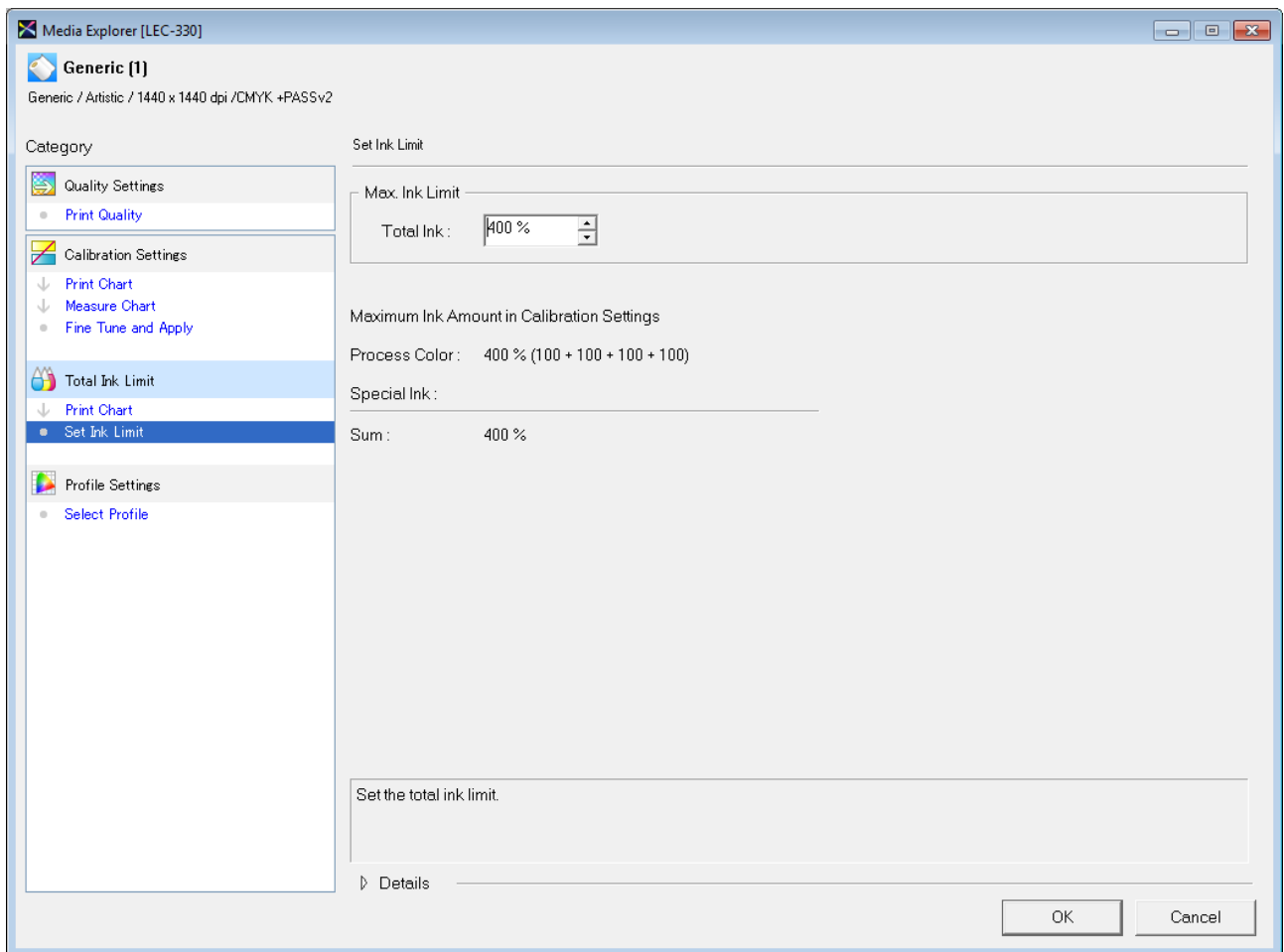


Fig. 3 Total Ink Limit

Note: Do not edit any linearization curves which will be displayed under **Fine Tune and Apply**.

5 Edit printer queues

How to configure a new printer queue for GMG SmartProfiler

1. Go to edit and click on **Queue A Properties**.
2. Navigate to **Quality** and choose your preconfigured **Media Type** inside of the **Quality Settings**.
3. Choose your preferred **Print Quality**, which you already configured in the previous chapter.
4. From the **Mode** list, select the desired print mode.
5. Choose the option **Density Control Only** in the **Color Management** menu.
6. Click on **OK** to save your settings.

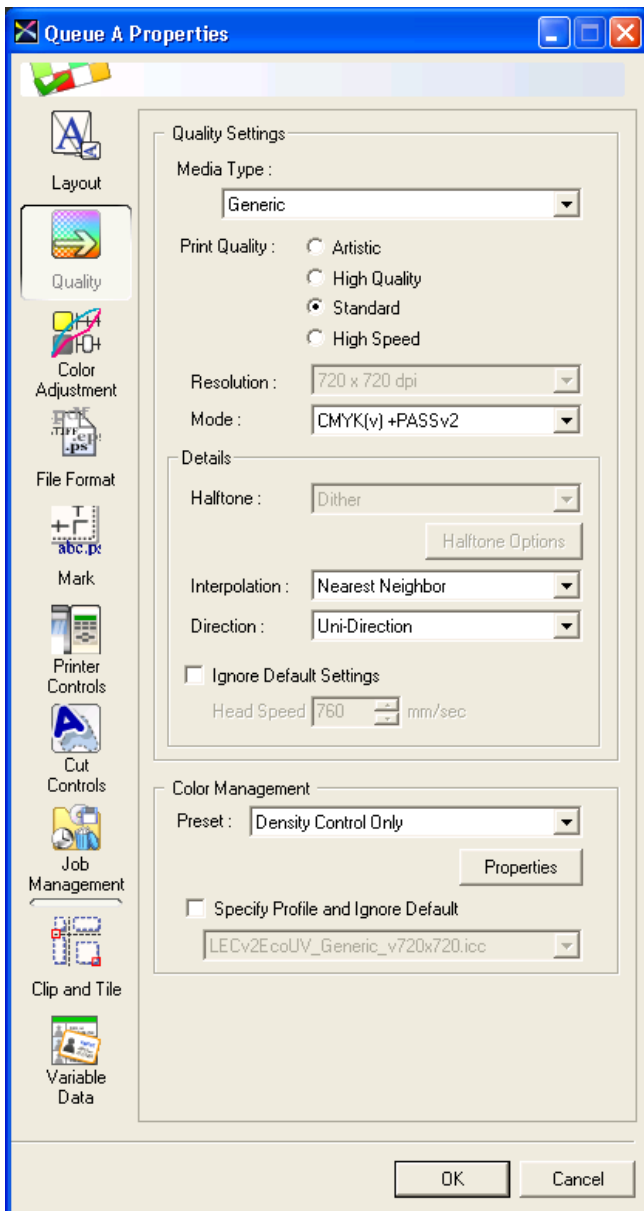


Fig. 4 Properties of the printer queue

Note: In the **Mark** tab you are able to adjust your **Label settings**. These Settings will help you later on, to identify and assign your print to the chosen **Printer Queue**.