



GMG ColorProof Job Ticket Integration

Imprint

© 2017 GMG Color GmbH & Co. KG

GMG GmbH & Co. KG

Moempelgarder Weg 10

72072 Tuebingen

Germany

This documentation and described products are subject to change without notice. GMG Color GmbH & Co. KG makes no guaranty as to the accuracy of any and all information and procedures described in this documentation. To the maximum extent permitted by applicable law, in no event shall GMG Color GmbH & Co. KG or the author be liable for any special, incidental, direct, indirect, or consequential damages whatsoever (including, without limitation, injuries, damages for data loss, loss of business profits, business interruption, loss of business information, or any other pecuniary loss) arising out of the use of or inability to use the software or this documentation or the provision of or failure to provide Support Services, even if GMG Color GmbH & Co. KG has been advised of the possibility of such damages.

Reprinting and copying, as well as other duplication including excerpts of this document, are prohibited without the written permission of GMG Color GmbH & Co. KG. This also applies to electronic copies.

GMG, the GMG Logo, and GMG product names and logos are either registered trademarks or trademarks owned by GMG Color GmbH & Co. KG.

All brand names and trademarks are the property of the respective owner and are expressly recognized as such. If brand names, trademarks, or other material are used without the permission of the respective owners, we request appropriate notification. We will immediately stop use of said items.

PANTONE® colors displayed in the software application or in the user documentation may not match PANTONE identified standards. Consult current PANTONE color publications for accurate color. PANTONE®, PANTONE® Goe™ and other Pantone, Inc. trademarks are the property of Pantone, Inc., © Pantone, Inc., 2007. Pantone, Inc. is the copyright owner of color data and/or software which are licensed to GMG Color GmbH & Co. KG to distribute for use only in combination with GMG ProductionSuite, GMG ColorServer, GMG InkOptimizer, GMG OpenColor, GMG ColorProof, GMG DotProof® and GMG Flex-oProof. PANTONE color data and/or software shall not be copied onto another medium or hard disk unless as part of the licensed products.

Microsoft and Windows are registered trademarks of Microsoft Corporation in the United States and/or other countries.

X-Rite is a registered trademark of X-Rite, Incorporated. HP, Hewlett-Packard, and Designjet are registered trademarks of Hewlett-Packard Company. Epson, Epson Stylus, and Epson Stylus Pro are registered trademarks of Seiko Epson Corporation. UltraChrome is a trademark of Epson America, Inc. Nexus is a trademark of Esko. Adobe and Photoshop are either registered trademarks or trademarks of Adobe Systems Incorporated in the United States and/or other countries. Canon is a registered trademark of Canon Inc.

Last update of this documentation: 8/17/2017

This documentation refers to the GMG software version No. 5.9.1.

1. How to Use Job Tickets in GMG ColorProof	5
1.1 Introduction	5
1.2 Job Ticket Hotfolder	5
1.3 Job Ticket Requirements	6
1.4 Supported Input Parameters	6
1.5 Job Ticket Report	9
1.6 Job Ticket Creator	10
2. Creating a Job Ticket for Use in GMG ColorProof with Esko Automation Engine	12

1. How to Use Job Tickets in GMG ColorProof

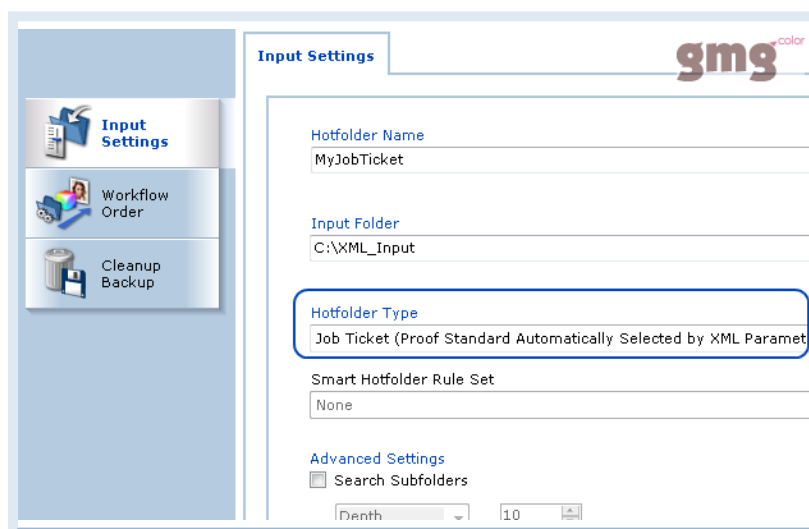
1.1 Introduction

We have incorporated the use of job tickets in our hotfolder technology, developing a new hotfolder type: the **Job Ticket Hotfolder**. A **Job Ticket Hotfolder** provides an XML interface for an easy integration of GMG ColorProof into any workflow system which is able to write a definable XML output file.



1.2 Job Ticket Hotfolder

The **Job Ticket Hotfolder** can be selected in the GMG ColorProof **Hotfolder** dialog > **Input Settings**.



The hotfolder defines only the input control itself.

Which images are recognized and how they are processed is usually defined in the **Workflow Properties** dialog box. With job tickets, these parameters can be read from the XML nodes.

Tip If you want to edit a job created by a job ticket, double-click the job in the job list and change all required parameters in the Manual Job Manager.

Differences of a GMG ColorProof workflow connected to a Job Ticket Hotfolder

Only one workflow can be connected to a Job Ticket Hotfolder.

A workflow that is connected to a Job Ticket Hotfolder does not show the same functionalities as a regular workflow.

The following functions are grayed out or are not visible in the user interface.

- ▼ Filters (File format is set to filter for *.proof files)
- ▼ Merge Files
- ▼ Remote Proofing
- ▼ Nesting

1.3 Job Ticket Requirements

- The job ticket **must** contain the **file name** of the input file so that job ticket and image file can be associated by the software.
- The job ticket has to be **renamed** and copied into the Job Ticket Hotfolder as *.proof file.
All other referenced files can be placed in any folder that can be accessed by GMG ColorProof.

Tip Make sure the color management item (proof standard, spot color set, etc.) you are referencing in a job ticket is already available in your GMG ColorProof database.

Example Job Ticket referencing ISO Coated v2 (39L)

The nodes in the job ticket determine which files are required, where they are found, and what processes should be performed.

The following example, referencing the proof standard ISO Coated v2 (39L), gives you an impression of the required structure of the XML file.

```
<?xml version="1.0"?>
<JobTicket>
  <ProcessDefinition>
    <ColorManagement>
      <StandardName>ISO Coated v2 (39L)</StandardName>
    </ColorManagement>
  </ProcessDefinition>
  <Images>
    <Image>
      <Files>
        <File>
          <FileName t="s">Job03145_Testfile.pdf</FileName>
        </File>
      </Files>
      <Identifier t="s"> Job03145_Testfile </Identifier>
    </Image>
  </Images>
</JobTicket>
```

1.4 Supported Input Parameters

Input parameters are represented by nodes in the XML structure. The following input parameters are supported in job tickets.

Image Definitions

Root node: JobTicket/Images/Image

<i>XML path</i>	<i>Node</i>	<i>Type</i>	<i>Description</i>	<i>Since Version</i>
Files	File/FileName	String	One or more file nodes for input file names.	5.9.0
	Pages (optional)	String	It is possible to define which pages of a multi-page PDF should be processed. The XML parameter must have the following structure: <a>:= page number := page number larger than <a> <X>:=<a> <a>- <X>;<X>	5.9.0
	Identifier (optional)	String	The identifier can be any combination of words or numbers and is useful for identifying jobs throughout the workflow system. In GMG ColorProof, the identifier appears in the Info pane, Image Label, and Job Ticket Report.	5.9.0
Channels (optional)	Channel/Color/Name	String	Name has to be identical with image channel's name. The channel node has to be defined for each image channel.	5.9.0
	Channel/ScreenInfo/Angle (optional)	Double	DotProof screening parameter. The channel node has to be defined for each image channel.	5.9.0
	Channel/ScreenInfo/Size (optional)	Double		5.9.0
	Channel/ScreenInfo/SizeUnit (optional)	Double (lpcm/lpi)		5.9.0

Image processing

Root node: JobTicket/ProcessDefinition

<i>XML path</i>	<i>Node</i>	<i>Type</i>	<i>Description</i>	<i>Since Version</i>
	JobName (optional)	String	Name of the resulting job.	5.9.0
PrintingFunction (optional)	HeldBeforePrint	Boolean	With this option, the job is created and put on hold in the job list.	5.9.0
PrintingFunction/Scale (optional)	ScaleX; ScaleY	Double	The scaling can be defined in each dimension.	5.9.0
PrintingFunction/Crop (optional)	Left/Right/Top/Bottom	Double	Cropping information can be referenced by defining values for Left, Right, Top and Bottom.	5.9.0
PrintingFunction (optional)	Copies	Integer	Number of printed copies of current job ticket.	5.9.1

Color Management and Mapping

Root node: JobTicket/ProcessDefinition

<i>XML path</i>	<i>Node</i>	<i>Type</i>	<i>Description</i>	<i>Since Version</i>
ColorManagement (optional)	StandardName	String	Proof standards can be referenced by inserting their name as used in GMG ColorProof. Note: PDF DotProof jobs require screening parameters.	5.9.0
	ProfileName	String	Custom profiles can be referenced by inserting the profile path.	5.9.0
ProofControlValidation (optional)	FilePathName	String	Path of the ProofControl standard XML file that will be referenced to validate the image.	5.9.0
	ChannelMappingRuleName (optional)	String	System rule that will be applied on the image.	5.9.0
ChannelMappingRule/ ChannelMappingRuleDetails/ ChannelMappingRuleDetail	ActionType	ReplaceRuleDetail, DontPrintRuleDetail, DefineRuleDetail, MapToDB3	Specifies the type of the channel mapping: Image channels can be replaced (ReplaceRuleDetail), renamed, or not printed (DontPrintRuleDetail). It is possible to redefine a channel color (DefineRuleDetail) with CMYK or LAB values. To map a channel to a spot color, select MapToDB3.	5.9.0
	InputChannelName	String	Name of the corresponding input channel.	5.9.0
ChannelMappingRule/ ChannelMappingRuleDetails/ ChannelMappingRuleDetail/ DefineRuleDetail/ Lab (optional)	L; a; b	Double	Color space values.	5.9.0
ChannelMappingRule/ ChannelMappingRuleDetails/ ChannelMappingRuleDetail/ DefineRuleDetail/ CMYK (optional)	c; m; y; k	Double		5.9.0
ChannelMappingRule/ ChannelMappingRuleDetails/ ChannelMappingRuleDetail/ DefineRuleDetail	AliasName (optional)	String	Channel name alias that will be replaced by ReplaceRuleName.	5.9.0
SpotSets/SpotColorSets (optional)	Name	String	Available sets of spot color database.	5.9.0
	Priority	Integer	Order of processing. Note: In case of nesting, job tickets will be nested in job with same spot sets.	5.9.0
ColorGradationMapping/ ColorGradationMappingRuleDetail (optional)	ColorName	String	Channel name.	5.9.0

<i>XML path</i>	<i>Node</i>	<i>Type</i>	<i>Description</i>	<i>Since Version</i>
	GradationPath	String	Gradation file (*.sfg).	5.9.0
Sharpening	CurrentSharpness	Enum: NoSharpness, ThreeDSharpness, UnsharpMask	General switch to switch on the Sharpen function and set the mode: Off, 3D Sharpness , Unsharp Mask	5.9.1
Sharpening	SharpnessRGB	Integer	3D Sharpness: Sets the sharpness level for RGB images.	5.9.1
Sharpening	SharpnessCMYK	Integer	3D Sharpness: Sets the sharpness level for CMYK images.	5.9.1
Sharpening	UnsharpAmountCMYK	Integer	Unsharp Mask: Sets the Amount for CMYK images.	5.9.1
Sharpening	UnsharpRadiusCMYK	Integer	Unsharp Mask: Sets the Radius for CMYK images.	5.9.1
Sharpening	UnsharpThresholdCMYK	Integer	Unsharp Mask: Sets the Threshold for CMYK images.	5.9.1
Sharpening	UnsharpAmountRGB	Integer	Unsharp Mask: Sets the Amount for RGB images.	5.9.1
Sharpening	UnsharpRadiusRGB	Integer	Unsharp Mask: Sets the Radius for RGB images.	5.9.1
Sharpening	UnsharpThresholdRGB	Integer	Unsharp Mask: Sets the Threshold for RGB images.	5.9.1

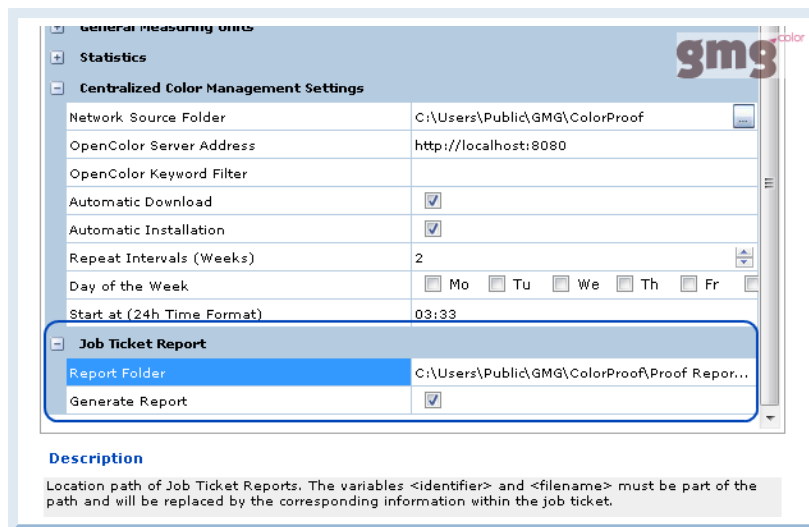
Remote Processing

Root node: JobTicket/ProcessDefinition

<i>XML path</i>	<i>Node</i>	<i>Type</i>	<i>Description</i>	<i>Since Version</i>
RemoteSite (optional)	ExportJobForRemoteProofing	Boolean	Enable job for remote proofing.	5.9.0
	PrintOnLocalPrinterBefore Exporting (optional)	Boolean	In addition print job locally.	5.9.0
	FtpServerUrl	String	Ftp connection details for Remote ColorProof.	5.9.0
	FtpPort (optional)	Integer		5.9.0
	FtpUserName	String		5.9.0
	FtpPassword (optional)	String		5.9.0
	FtpTargetDirectory (optional)	String		5.9.0
	TargetPrinter	String	Printer name.	5.9.0
	NetworkLocation	String	Use network location instead of FTP.	5.9.0
	RemoteSiteName	String	Remote connection name to find in ColorProof.	5.9.0

1.5 Job Ticket Report

If a file has been processed with a job ticket, GMG ColorProof generates a **Job Ticket Report** XML. It contains all results of the processing steps (e.g. the used standard or profile, channels, verification results). The location path of the report can be configured in the **System** view > **General** tab.

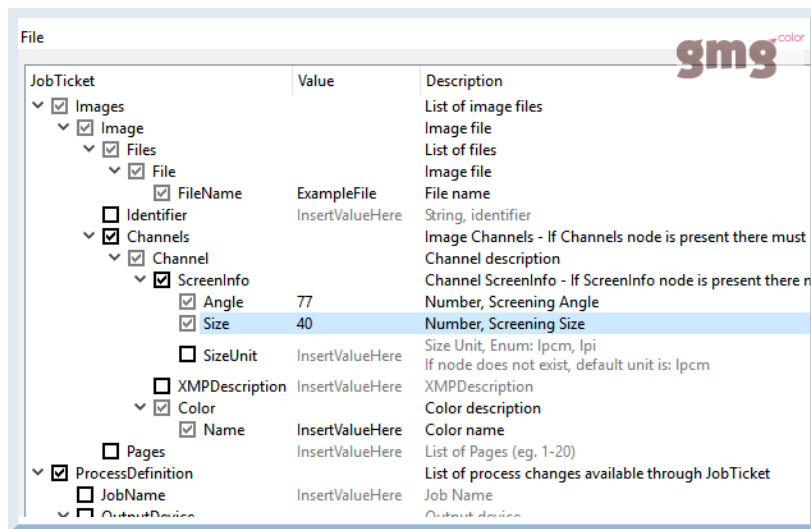


The below screenshot of an example report, shows the job name in GMG ColorProof, used calibration and media, and the image dimensions. The report details comprise all important information concerning the color management and the used proofing components, and provide useful information on the color accuracy based on the control strip measurements.



1.6 Job Ticket Creator

The GMG Job Ticket Creator gives you an easy-to-use solution to create XML-based job tickets. It provides an intuitive interface to quickly define the desired definitions and processes of your workflow.



How to create an XML job ticket

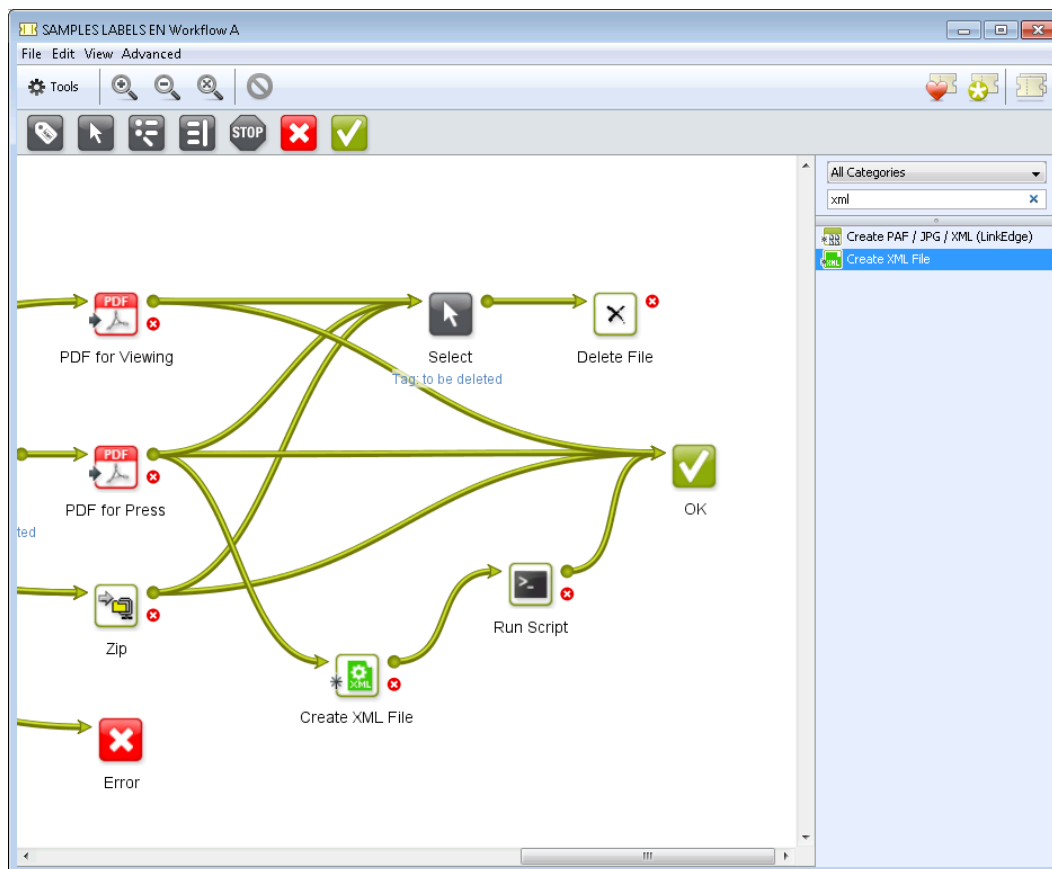
1. Click the triangle button next to the path or node to expand the XML path to the node you want to edit.
2. Activate the check box of the XML path you want to edit.
3. Enter the desired values in the respective **Value** field.
4. Click **File > Save** to save your job ticket as an XML.

2. Creating a Job Ticket for Use in GMG ColorProof with Esko Automation Engine

In the following example, we show you how to create an XML output file for use in GMG ColorProof with the workflow software Esko Automation Engine 12. The example shows the basic steps and can easily be transferred to other workflow solutions.

Rename the file extension

1. Copy the batch file *RenXMLtoPROOF.bat* to C:\Esko\bg_data_fastserver_v100\Scripts\Batch (This batch file is required to rename file extensions, in this case *.xml files to *.proof files.)
2. Add step **Create XML File** into your workflow.
3. Add **Run Script** after XML creation step for renaming *.xml file extension to *.proof.



Configure the XML output

The next step is to create a dynamic XML, for example [File], to insert the **file name** of the actual job in the written XML. In our example, we are using Esko **SmartName** (to open the Smart Names dialog click on the "[]").

Edit Ticket of Create XML File

Output in: [URL of Folder of originating Input of (enclosing) Workflow]/Production/ Browse

File Name: [File]_XMLforProof Browse

```
<?xml version="1.0"?>
<JobTicket>
  <ProcessDefinition>
    <ColorManagement>
      <StandardName>ISO Coated v2 (39L)</StandardName>
      <StandardId t="s">f87a82e8-8d50-4920-8614-802ca6a87efb</StandardId>
    </ColorManagement>
  </ProcessDefinition>
  <Images>
    <Image>
      <Files>
        <File>
          <FileName t="s">[File].[Extension of File]</FileName>
        </File>
      </Files>
      <Identifier t="s">[File]</Identifier>
    </Image>
  </Images>
</JobTicket>
```

☒ Replace reserved characters in SmartName values with XML entities

☐ Validate XML

Save As... Manage Public Parameters... OK Cancel

Configure the Run Script

Ensure that you have copied the batch file *RenXMLtoPROOF.bat* to *C:\Esko\bg_data_fastserver_v100\Scripts\Batch*. Otherwise jobs will run into an error.

